

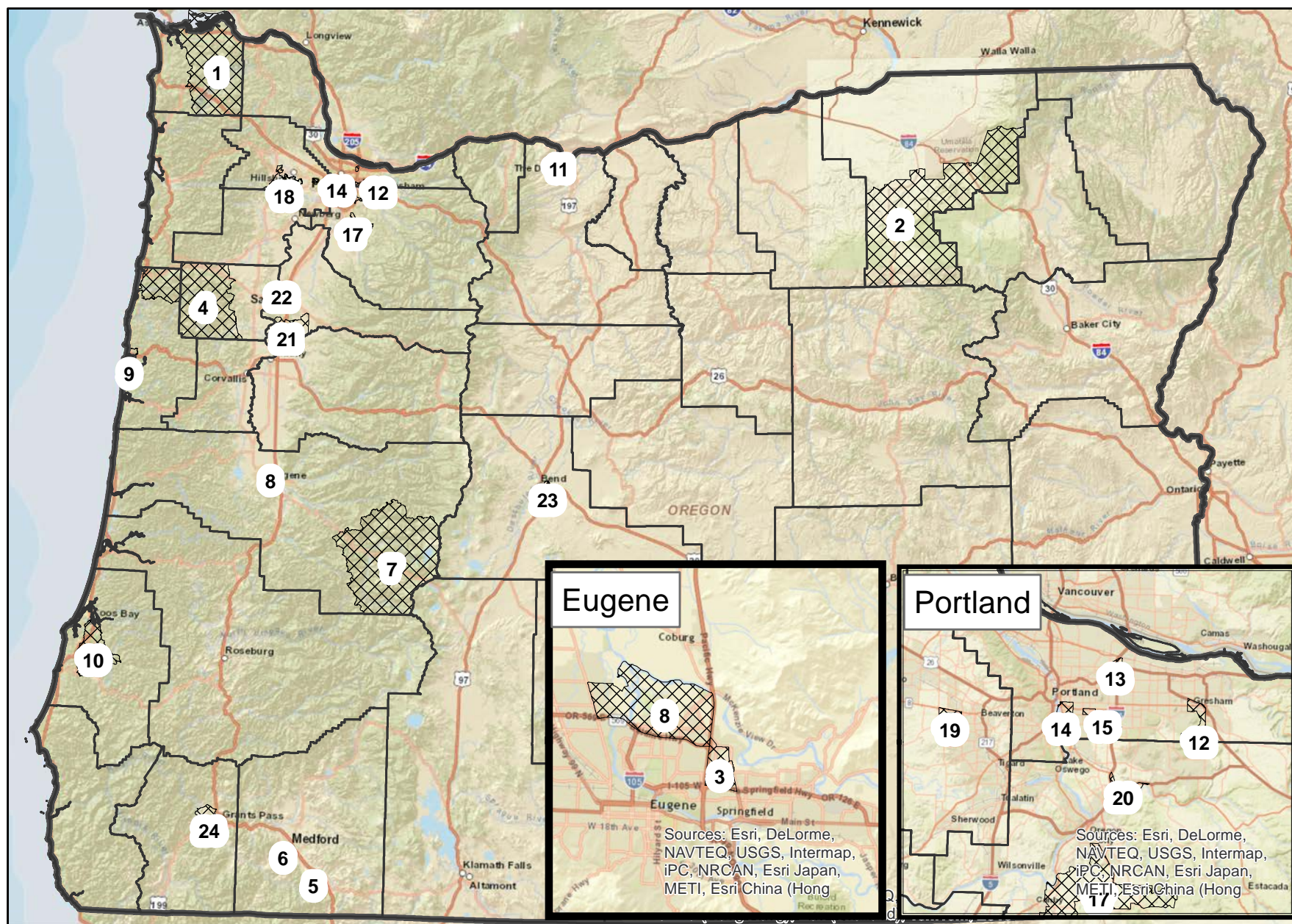
Synar Coverage Study and Tobacco Retail Environmental Assessment Overview

The following maps show the census tracts that were randomly selected to be part of the Synar coverage study. The map on page two shows an overview of the entire state. The maps on pages three and four show examples of sampling areas.



The coverage study is a requirement of the Synar amendment for those states without a statewide tobacco retail license requirement. The purpose of the coverage study is to determine how many tobacco retailers are missing from the list maintained at the state. If the state has less than 80% of the retailers in the randomly selected areas, the state will need to redo the coverage study every year until the percentage goes above 80%. Once 80% is reached, the state is only required to do the coverage study every three years.

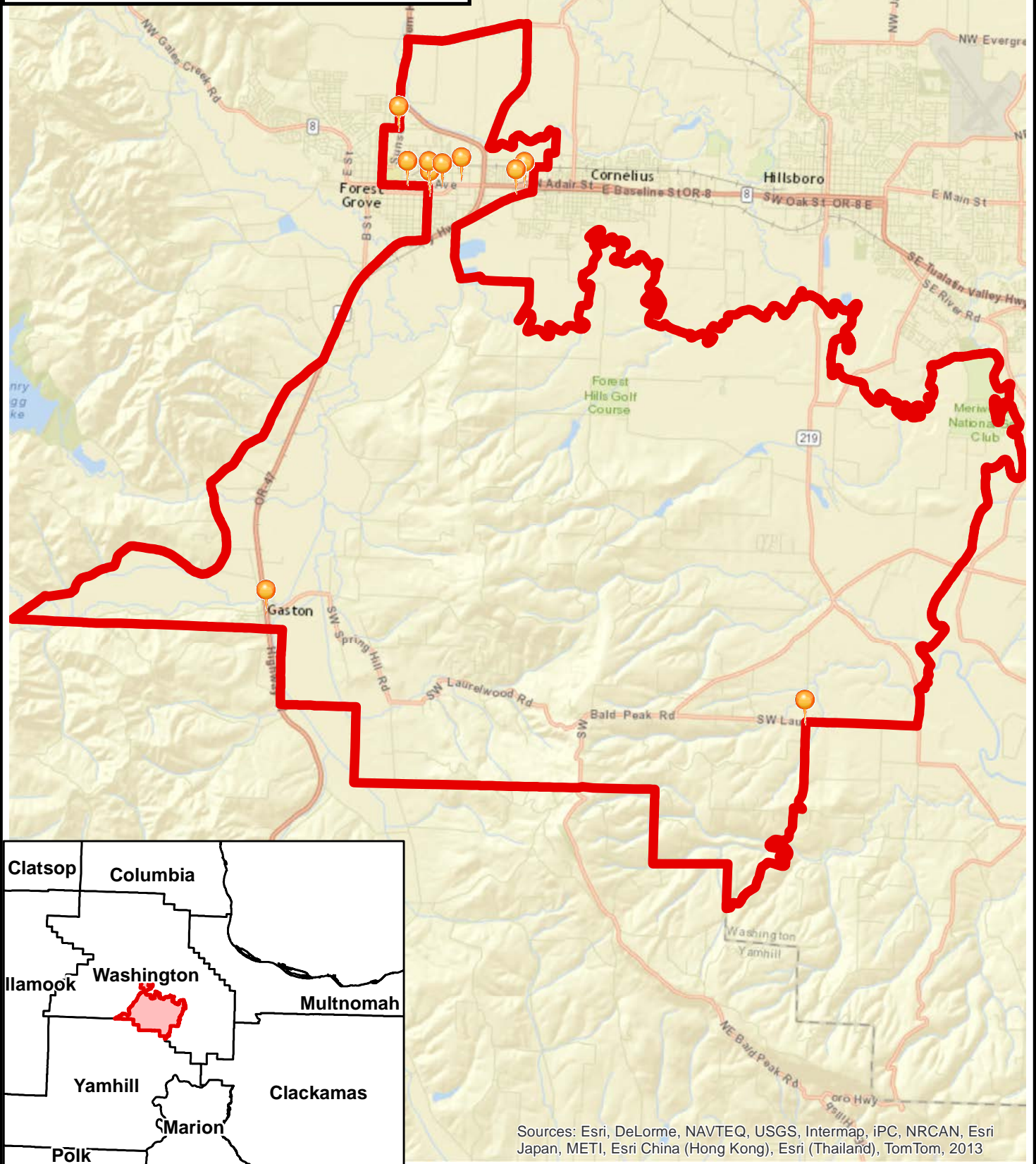
In addition to the coverage study, the state staff conducting the study will do a brief assessment of the retail environment for tobacco, food, and alcohol. The assessment follows the Standardized Tobacco Assessment for Retail Settings (STARS) tool. Most counties in Oregon used the STARS tool to do a retail assessment in 2014. The purpose of the state collecting this information is to reassess the retail environment in a systematic way to compare to the last assessment and to other jurisdictions using the STARS tool.

Areas randomly chosen to be sampled for survey





Synar coverage study 2016 Unit 18 (Forest Grove and Gaston)

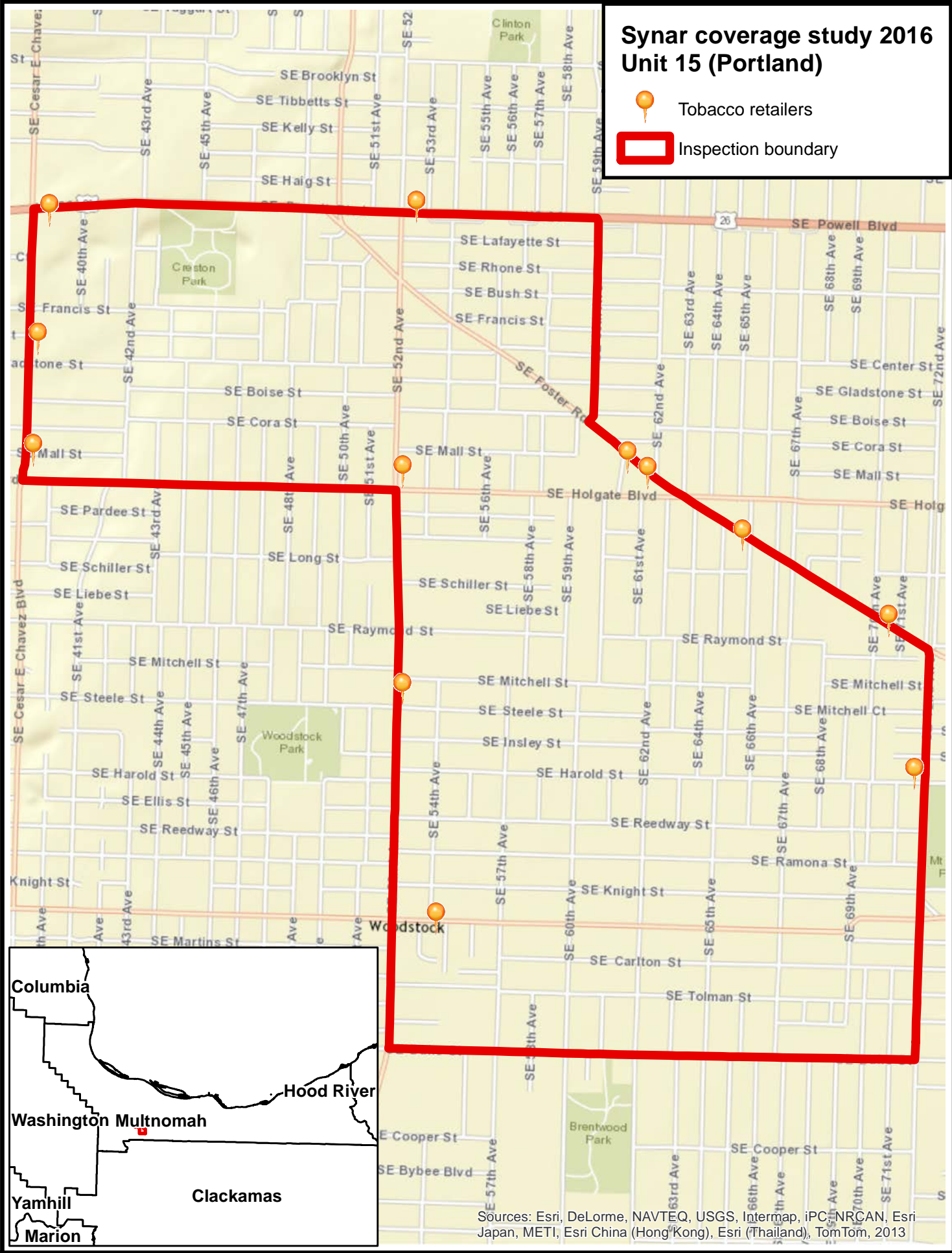
-  Tobacco retailers
-  Inspection boundary



Sources: Esri, DeLorme, NAVTEQ, USGS, Intermap, iPC, NRCAN, Esri Japan, METI, Esri China (Hong Kong), Esri (Thailand), TomTom, 2013

Synar coverage study 2016
Unit 15 (Portland)

-  Tobacco retailers
-  Inspection boundary



Sources: Esri, DeLorme, NAVTEQ, USGS, Intermap, iPC, NRCAN, Esri Japan, METI, Esri China (Hong Kong), Esri (Thailand), TomTom, 2013