



OREGON
HEALTH
AUTHORITY

August 21, 2025

SHIP update to CLHO

August 2025

Cintia Vimieiro

Agenda

1. SHIP steering committee direction
2. Developing SHIP priorities: community feedback and methods, key themes, final priorities
3. Strategy development



2 SHIP steering committee direction

3 Developing priorities

Engagement

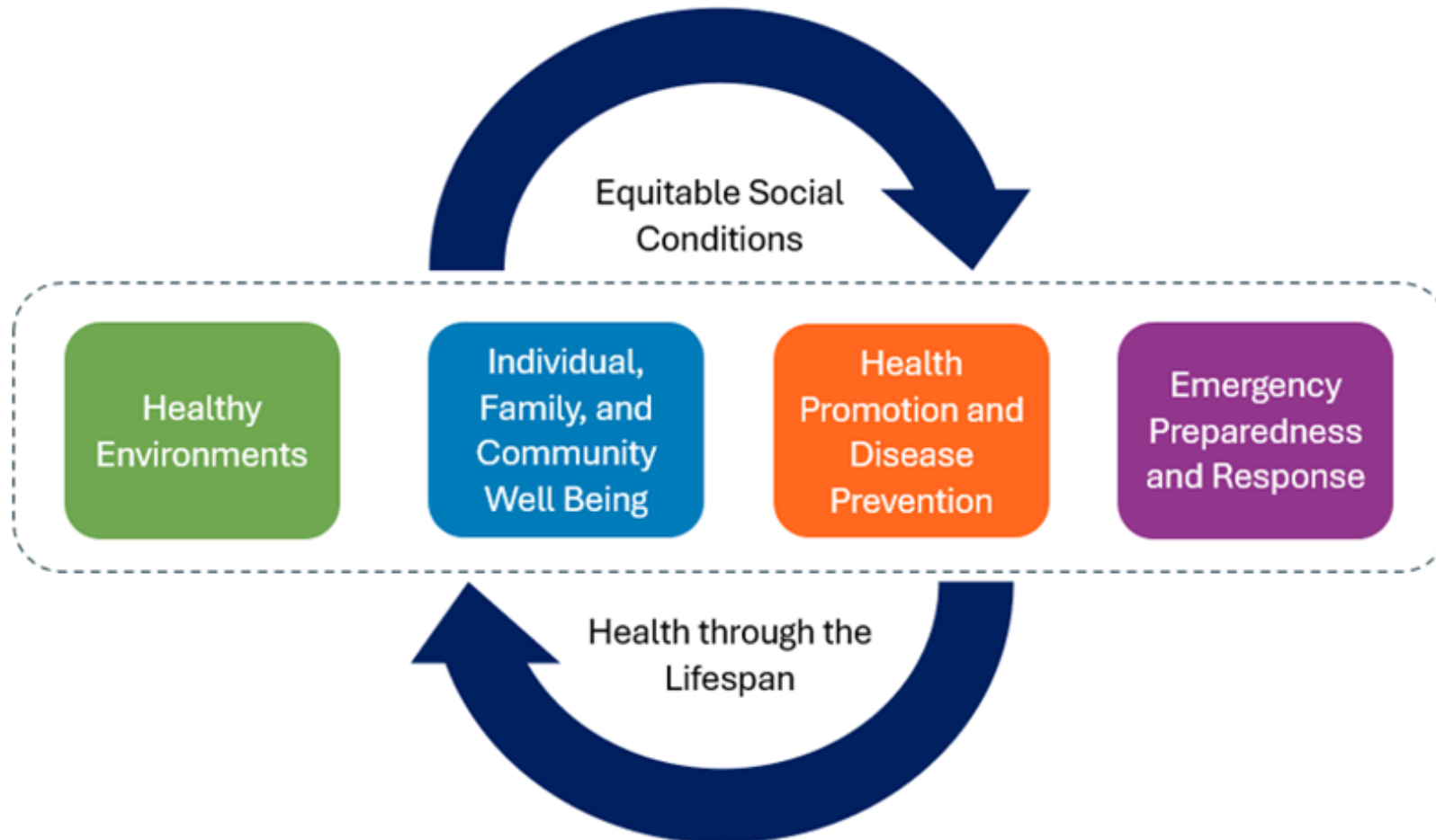
- ❑ 11 Funded partners
 - ❑ 1760 estimated number of people who participated
- ❑ Internal Engagement (Staff)
 - ❑ 5 internal meetings/presentations- estimate 250 staff
- ❑ External engagement - 34 meetings, estimate 740 people
 - ❑ First time presentations- rural engagement, local community health plan meetings, Equity office conference
 - ❑ Returning to previous spaces and following up with SHA updates, info about priorities
 - ❑ Conference presentations- 3 (Disability Community, Asian Community and General)
- ❑ Survey in English and Spanish shared widely

How the SC determined priorities

- We shared the themes and topics that came up with our Steering Committee in May 2025.
- As members of the steering committee processed their decision to identify priorities multiple non-Tribal members highlighted the importance of the feedback from the OHA Tribal Monthly meeting—which was that this work was all important and that we should take a collective focus. Ultimately, we did take this approach in our framing and chosen priorities.

SHIP 25-29 Priorities

All People| All ages| All places



4 Strategy Development

- We are gathering and refining strategies internally, focusing on those strategies that exist or are presently funded
- Aligning these strategies with new SHIP priorities

Sample Strategies | 1

Example: Increase access to early childhood home visiting programs statewide.

- Parent and caregiver support was identified as a priority need in Oregon through the recent Title V needs assessment. Evidence-based and evidence informed home visiting has been shown to improve maternal health, birth outcomes, school readiness, positive parenting practices, and reduce child maltreatment. State general funds, federal funds including Title V and MIECHV, Medicaid reimbursement and local general funds support implementation of the Babies First!, CaCoon, Family Connects Oregon, and Nurse Family Partnership programs.

Sample Strategies | 2

Examples: Increase routine dental visits for all people.

- Encourage primary care providers to use fluorides to help prevent new cavities and treat cavities that have already started.
- Support primary care use of fluorides for cavity prevention and treatment for existing cavities.
- Promote the use of fluoride by primary care providers for cavity prevention and for the treatment of existing cavities

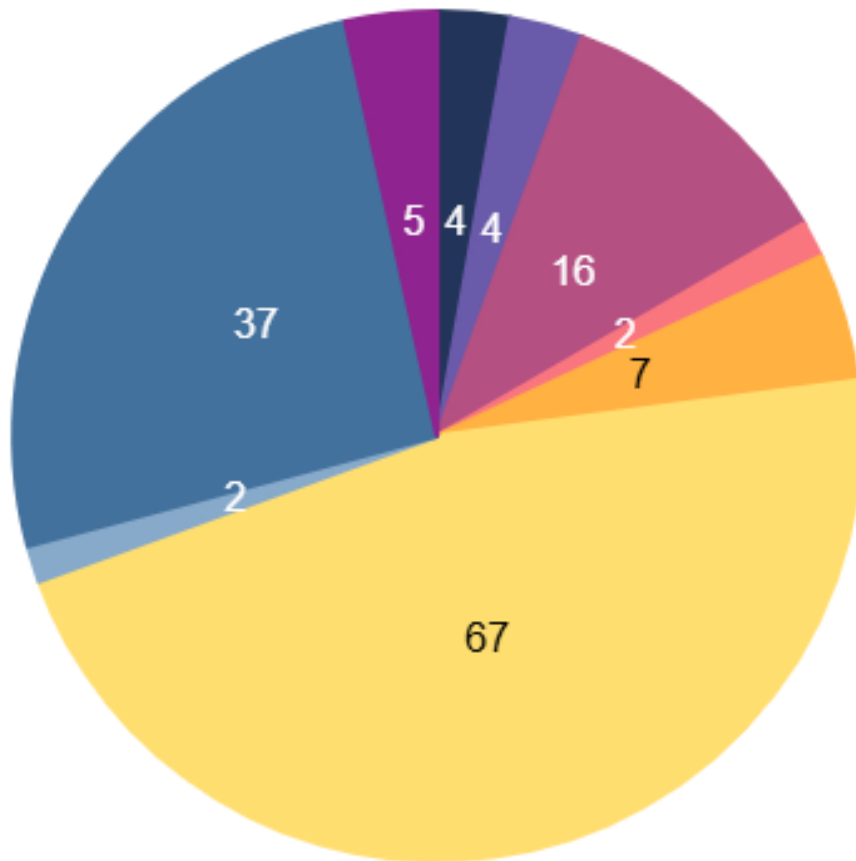


OREGON
HEALTH
AUTHORITY

**Thank you
Cintia**

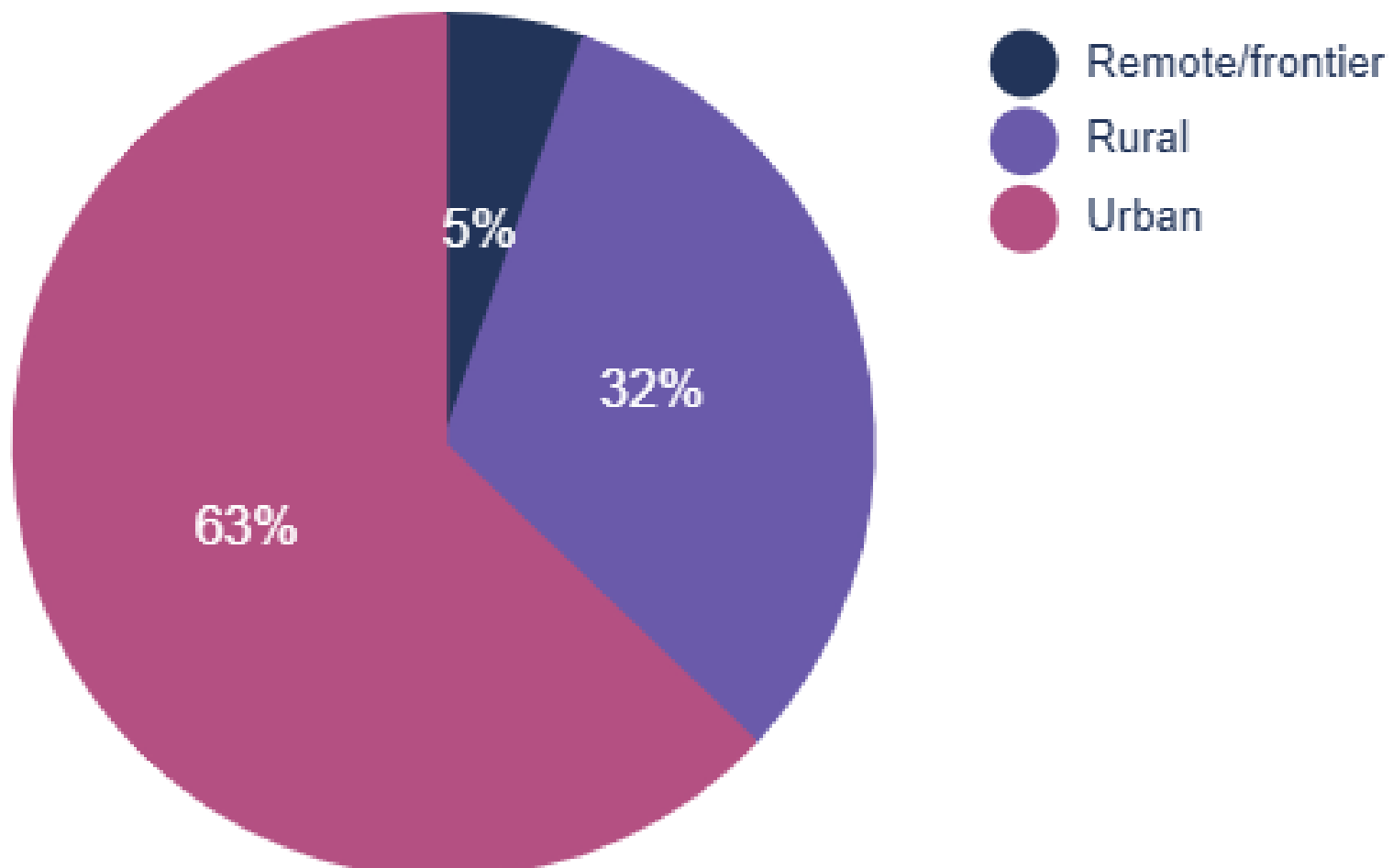
Responses

Submissions by role



- I am a community member
- I work for a CCO
- I work for a LPHA
- I work for a Tribal government or health department
- I work for OHA in a Division other than Public Health Division
- I work for OHA's Public Health Division
- I work for the State of Oregon, in an Agency other than OHA
- I work with a Community Based Organization (this includes non-OHA community health workers)
- None of these

Submissions by region

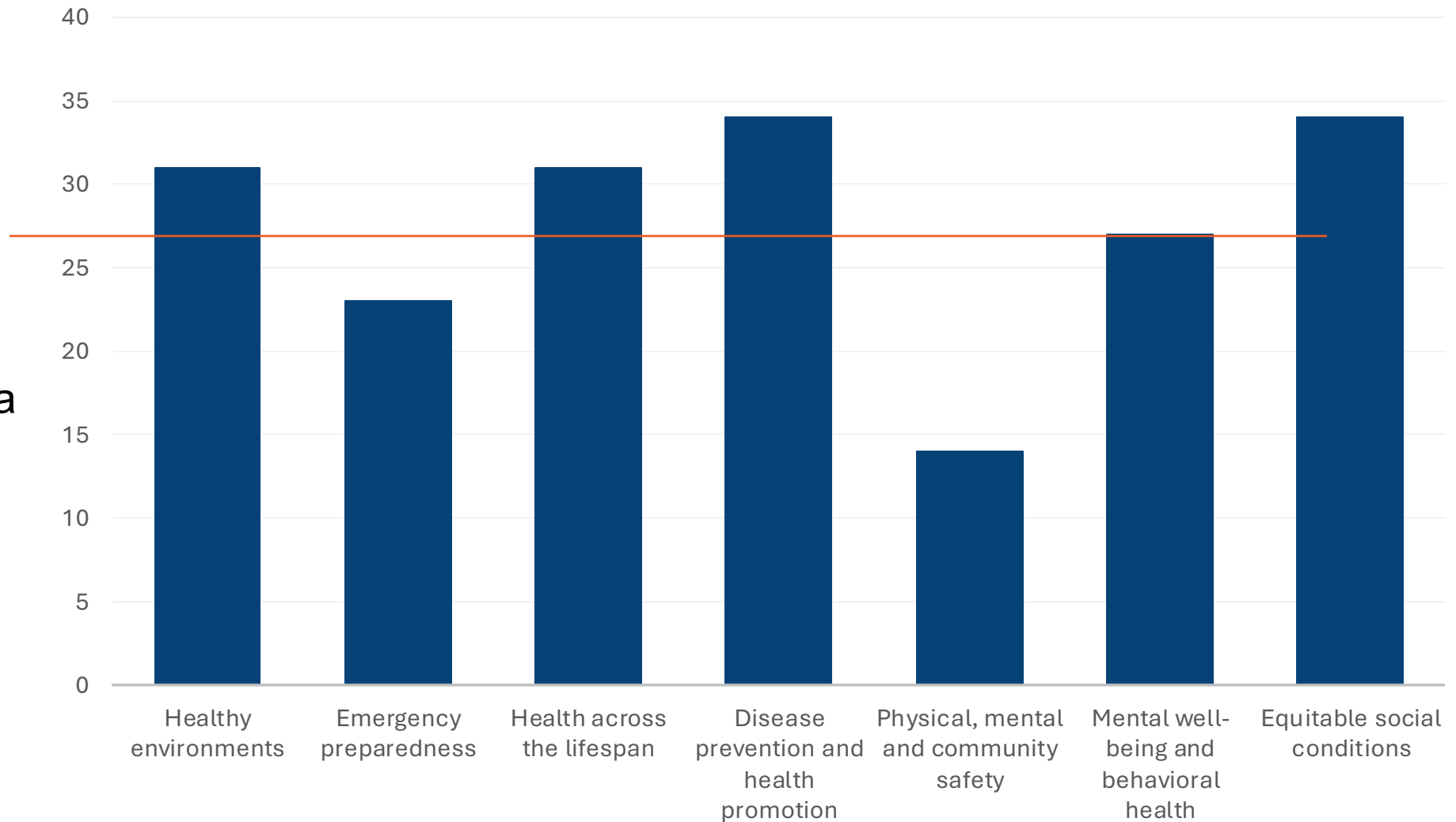


State staff

- Approximately 80 responses
- Statewide representation, majority from Portland metro area
- Range of ages

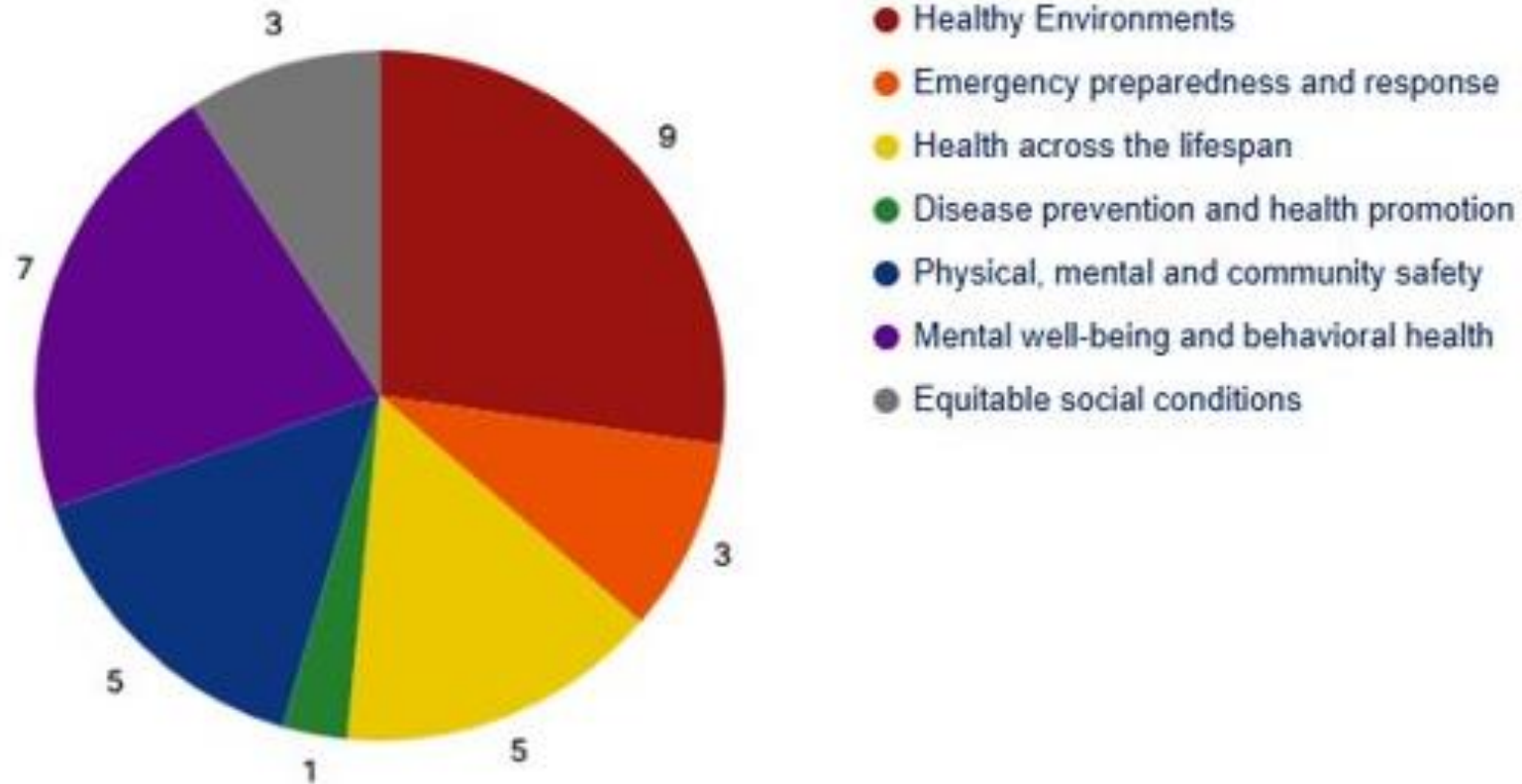


Top preferences of state staff



Funded organizations

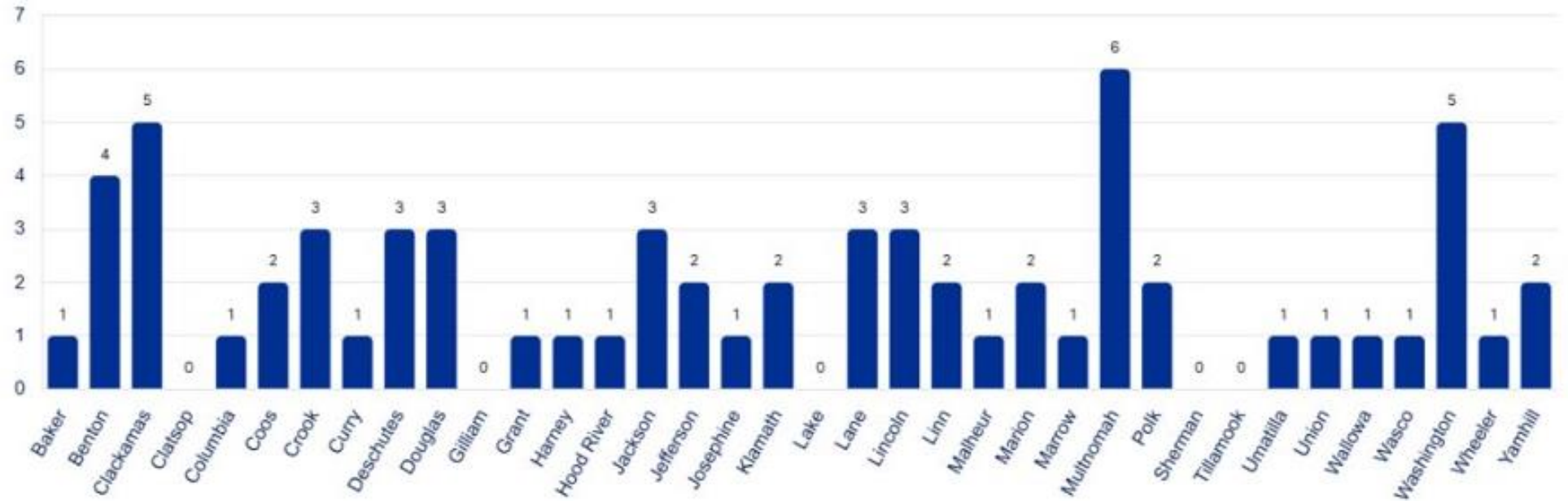
Top 3 Priorities



Funded organizations

Total Participants
1760

Counties Served



Other concerns shared

- Transportation
- Behavioral health system
- Education
- Financial education
- Housing affordability
- Food accessibility
- Green and safe spaces
- Job preparedness

Criteria with Steering Committee feedback

Strategies should be

- ☐ Measurable
- ☐ Developed with public engagement and/or partnerships, including LPHAs, Tribes, steering committees, boards, end users, members of the public and others.
- ☐ Work that public health is already doing, plans to do or could do by the end of 2029
- ☐ Advances health equity
- ☐ Led with or by state public health either directly or through

Steering committee suggests incorporating strategies that

- ☐ Are workable in Eastern OR and/or rural and remote (frontier) areas.
 - ☐ If we can demonstrate it, so much the better.
- ☐ Include strategies for different age ranges