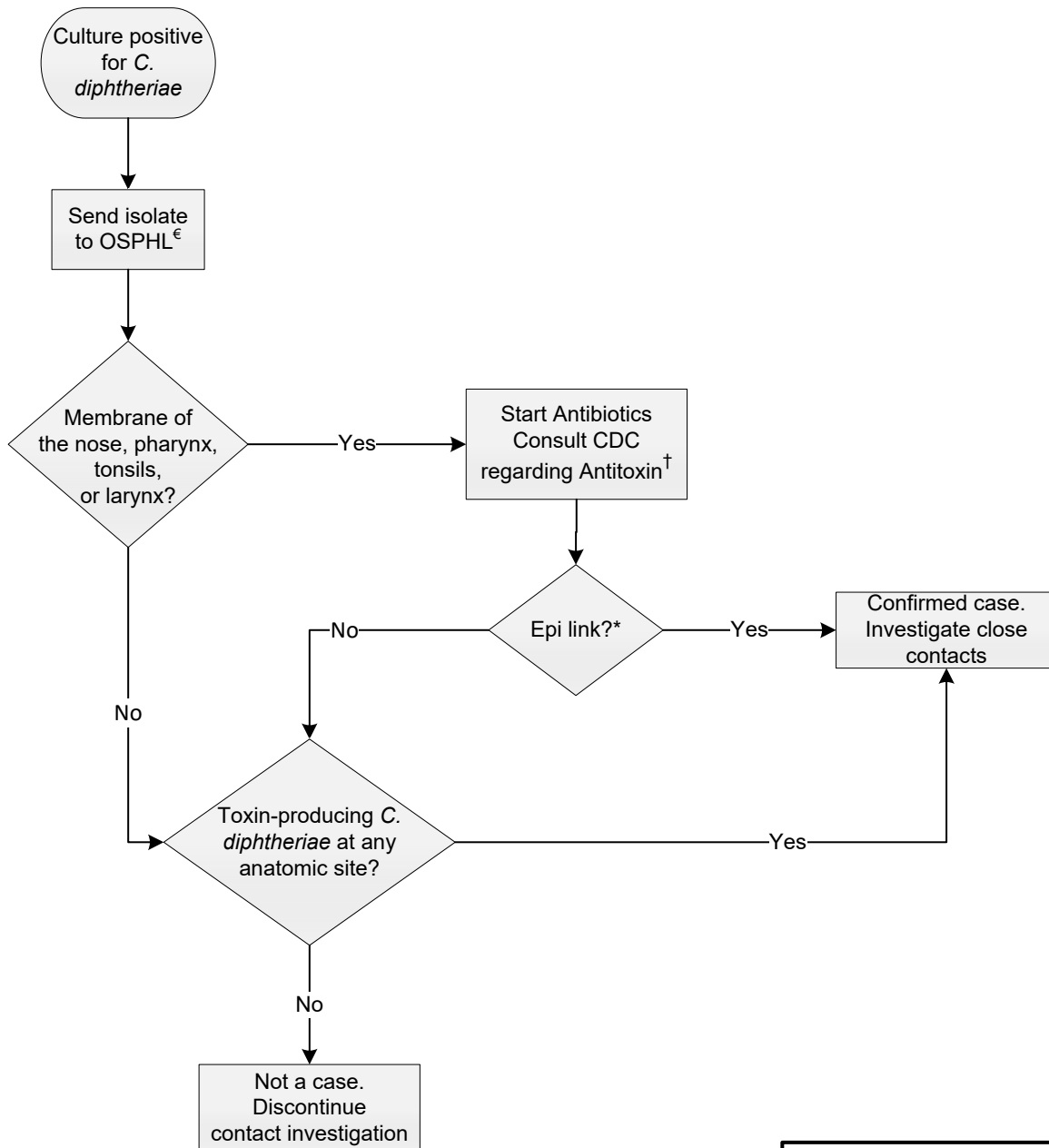


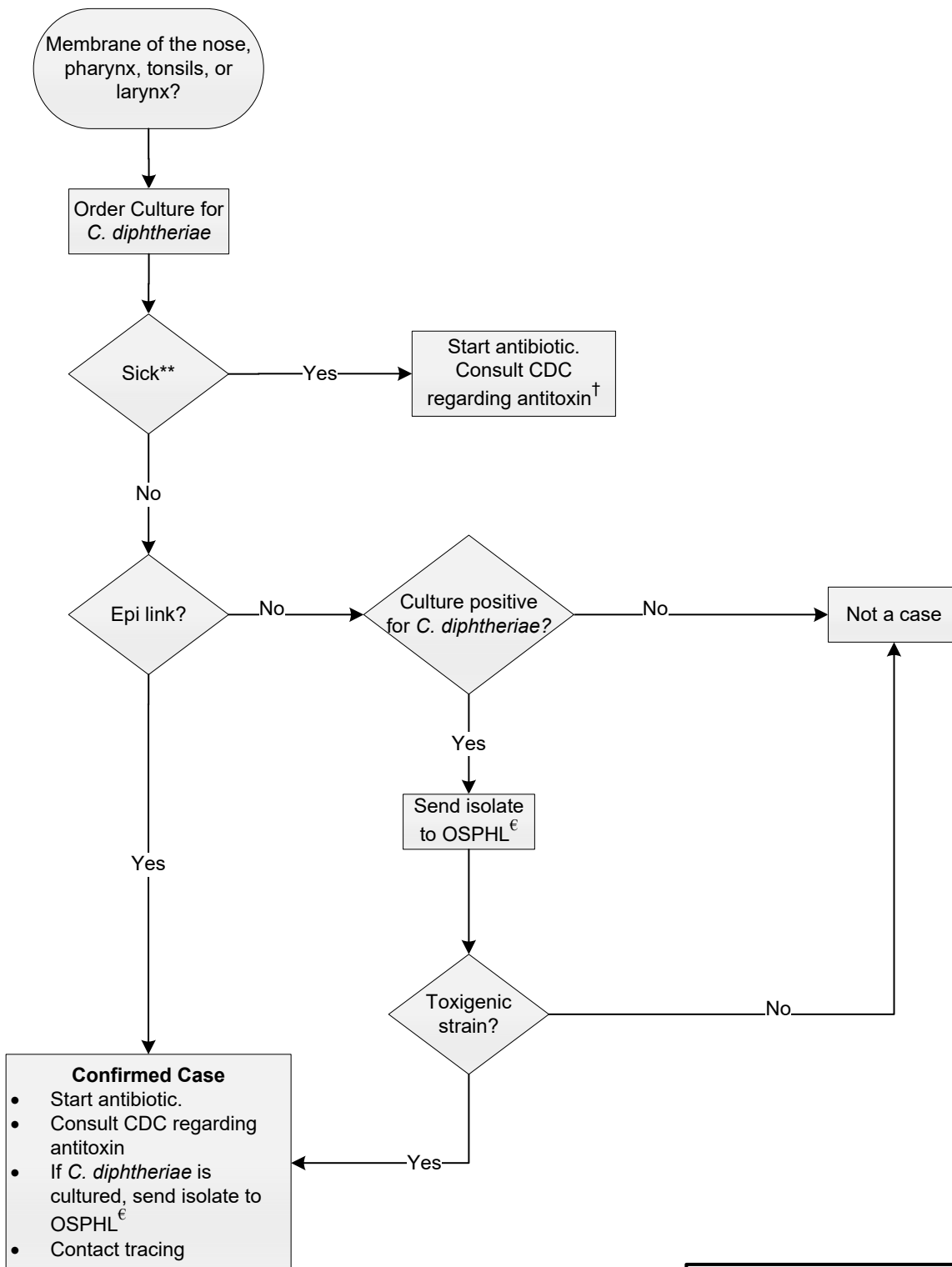
## ACDP Recommendations How to Manage a Suspect Case of Diphtheria



<sup>€</sup> For referral to CDC for toxin testing

<sup>\*</sup> Recent contact (< 2 weeks) with a diphtheria case.

<sup>†</sup> But ultimately, defer to clinician judgment



\* Recent contact (< 2 weeks) with a diphtheria case.

\*\* Toxic-appearing, bull neck, airway obstruction, myocarditis, etc.

€ For referral to CDC for toxin testing

† But ultimately, defer to clinician judgment