

MCAH Title V 2025 Needs Assessment

Presentation to

CLHO Access to Clinical & Preventative Service Committee



May 5, 2025

MCH Title V Block Grant

MCH Title V Block Grant provides federal funds to improve the health of Oregon's women, infants, children, adolescents, and children and youth with special health care needs.

States are required to:

- Conduct a 5-year needs assessment
- Choose among 19 national priority areas/performance measures in 5 population domains; plus state-specific priorities
- Develop strategies and measures to “move the needle” on the selected national priorities
- Align use of funds with these priorities and strategies

Oregon's Title V Needs Assessment and priority selection

- State level Title V priorities are revised every 5 years based on the findings of the state's MCAH Needs Assessment.
- State Title V priorities include:
 - At least one priority in each population domain, chosen from a set provided by the MCHB, and
 - state-specific priorities reflecting other Oregon MCAH needs.
- Priorities for the current 5-year cycle (Oct 2021 – Sept 2025) are based on findings of the 2020 Oregon's Title V Needs Assessment.
- The 2025 MCAH Title V Needs Assessment is being used to guide the selection of state Title V priorities for Oct 2025-Sept 2030.

MCAH Title V Block Grant Priority Options by Domain: 2026 – 2030

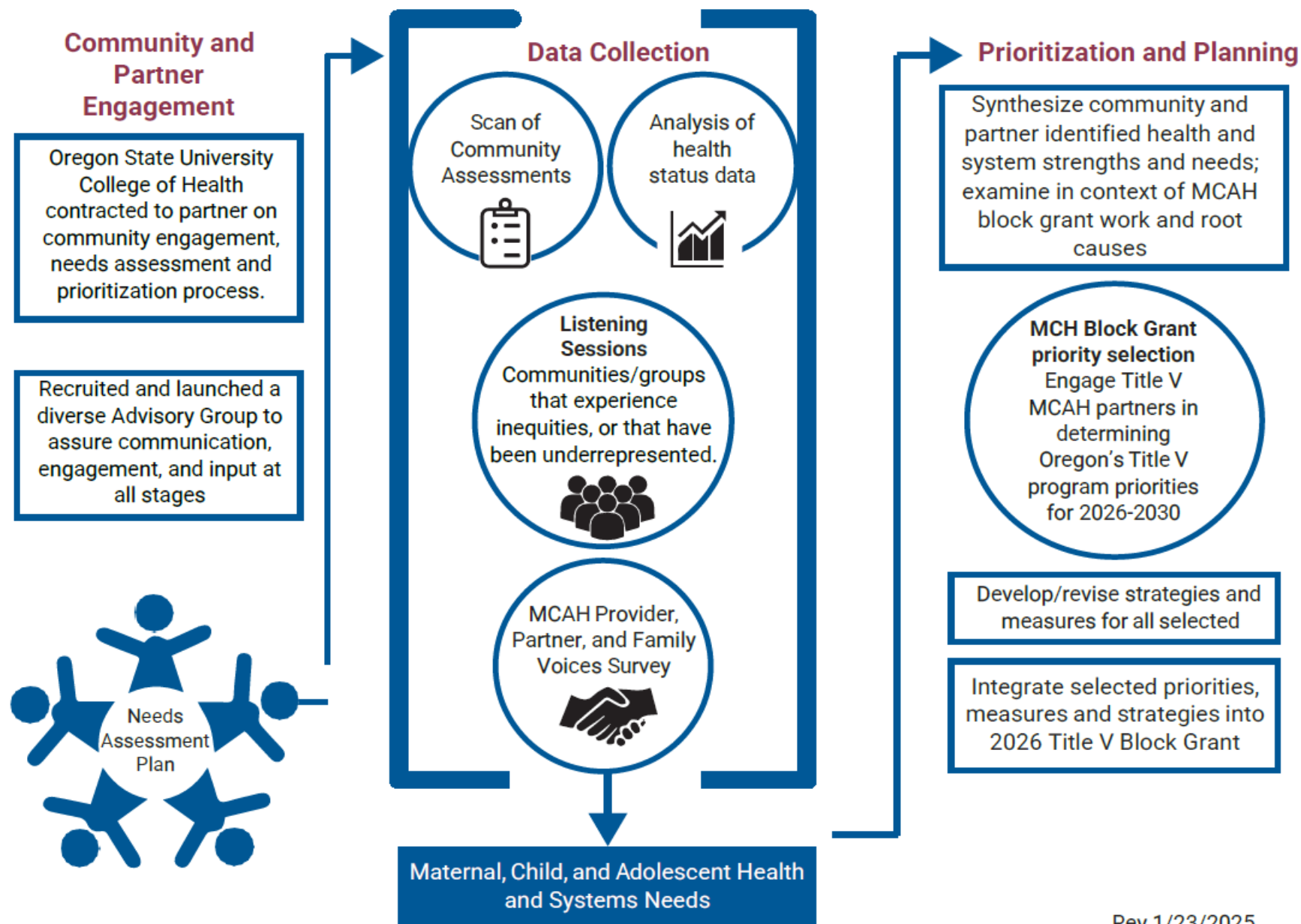
Notes:

- States are required to pick at least one national priority area in each population domain.
- A priority can only count toward the requirement in one domain.

Population Domains					
National Priority Areas	Women's and Maternal Health	Perinatal and Infant Health	Child Health	Adolescent Health	CYSHCN
	Postpartum care	Breastfeeding	Developmental screening	Adolescent well care	
	Postpartum mental health	Safe sleep	Physical activity	Adolescent mental health	
			Food insufficiency	Connection to Adults	
	Dental health		Dental health (ages 0-11)	Dental health (ages 12-17)	
			Medical home (ages 0-17)		Medical home
	Housing instability	Housing instability	Housing instability	Bullying prevention	Bullying prevention
	Discrimination in healthcare	Discrimination in healthcare		Transition to adult health care	Transition to adult health care

Community Identified State Priority Areas						
Access to culturally responsive and trauma informed care	Parent and Caregiver Support	Child Care	Substance Use (Impact on women and children)	Safe and healthy Environments	Food Insufficiency	Housing Instability

Oregon's 2025 Title V Needs Assessment Process



Data tools

2025 Oregon Maternal, Child, Adolescent Health (MCAH) Needs Assessment



Data Tools



Developed for use at the
Title V MCAH Prioritization Meetings Winter 2025



Return to Table of Contents

Overview of the Prioritization Process

What is the prioritization process?

The prioritization process is when we take all the information gathered in the Needs Assessment, figure out what it tells us about the health of the MCAH community, and use that information to guide the development of Oregon Title V program priorities for 2026-2030.

Who participated in the meetings?

State MCAH Title V partners including: Advisory Group members, local Title V grantees (LPHAs and Tribes), and CBO partners who participated in the Needs Assessment.

What was the outcome of the prioritization meetings?

A set of recommendations for state MCAH leadership about which priorities to select for Oregon's 2026-2030 MCAH Title V program.

Parameters for Priority Recommendations

Recommendations need to align with Federal MCAH Title V funding parameters including:

- At least one national priority in each population domain chosen from the list provided by the federal Maternal and Child Health Bureau.
- Community Identified State Priorities that reflect the needs of Oregon's MCAH community. (These can cross population domains and reflect needs raised by communities during the assessment.)

The recommended priorities will be for Oregon statewide.

- Local Title V grantees will have flexibility to decide which of the priorities to work on and which MCAH communities to focus on with their funding.

Prioritization Meeting Partner Recommendations

#	Women's' and Maternal Health	Perinatal and Infant Health	Child Health	Adolescent Health	Children and Youth with Special Health Needs	Community Identified State Priority Areas
1	Postpartum mental health	Housing instability	Food insufficiency	Adolescent mental health	Medical home	Access to culturally responsive and trauma-informed care
2	Postpartum care	Discrimination in health care	Medical home (ages 0-17)	Connection to adults	Transition to adult health care	Parent and caregiver support
3	Discrimination in health care	Breastfeeding	Housing instability	Adolescent well care	Bullying prevention	Child care
4						Safe and healthy environments

After the Partner Prioritization Process

MCAH Title V staff retreat

- Reflect on NA findings and prioritization partners' redocumentations
- Consider the recommendations through the lens of the Title V program
- Develop a set of recommendations for Title V Leadership

Title V Leadership (OHA MCAH and OCCYSHN)

- Consider priority recommendations from OHA MCAH staff and OCCHYN staff
- Selected 2026-2030 Title V Priorities
- Language modifications made based on consultation with HRSA partners

Oregon 2026-2030 MCH Title V Priorities

Women's' and Maternal Health	Perinatal and Infant Health	Child Health	Adolescent Health	Children and Youth with Special Health Needs	Community Identified State Priority Areas
Postpartum mental health	Housing instability	Food insufficiency	Adolescent mental health	Medical home*	Person and family centered services and care
Postpartum care * (with a focus on PP mental health)	Discrimination in health care	Medical home * (ages 0-17)	Connection to adults	Transition to adult health care	Parent and caregiver support
Discrimination in health care	Breastfeeding	Housing instability	Adolescent well care	Bullying prevention	Child care
					Safe and healthy environments

* Universal NPM

Note: Social and Environmental Drivers of Health will be an anchor priority crossing all Title V work.

Rev 4/3/25

Needs Assessment Results - Final Priorities



Women's and Maternal Health Domain



Overview

Women's & Maternal Health Domain

This population domain includes pregnant individuals and women of reproductive age.

Key issues include:

- Social determinants of health and equity – including employment, income, housing, and childcare have a major impact on the health of this population.
- Stressors – including stress from racism and discrimination, financial stressors, relational and caregiver stress – have a disproportionate impact on women and can be increased during pregnancy. Toxic stress can have a lifelong impact on health and can be passed to the next generation through epigenetics.
- Maternal mortality and morbidity. Mental health conditions, including substance use disorder are the most prevalent underlying cause of pregnancy-related death.

Priority Area Options

Women's & Maternal Health Domain

Postpartum
care



Postpartum
mental health



Housing
instability



Discrimination
in health care



Dental
health





Postpartum Care

Women's & Maternal Health Domain





Postpartum Mental Health

Women's & Maternal Health Domain



Perinatal & Infant Health Domain



Overview

Perinatal & Infant Health Domain

This population includes pregnant individuals and children aged 0 to 1 year.

Key issues include:

- Social determinants of health including economic stability, educational and employment opportunities, housing, transportation, food and diaper security, and child care.
- Brain development and attachment depend on relationships with caregivers and early experiences.
- Adverse experiences can have lifelong consequences.
- Congenital syphilis has become an increasing concern in Oregon with steep increases in the past several years.
- Pregnant individuals and infants are particularly vulnerable to the impacts of climate change such as wildfires and other extreme weather events.

Priority Area Options

Perinatal & Infant Health Domain

Breastfeeding/
chestfeeding



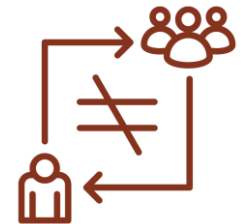
Infant safe
sleep



Housing instability



Discrimination in
health care





Housing Instability

Perinatal & Infant Health Domain



Child Health Domain



Overview

Child Health Domain

This population includes children 1 to 13 years old.

Key issues include:

- Social determinants of health such as neighborhood safety, food sufficiency, stable and safe housing, and nurturing relationships with their caregivers and other adults such as teachers.
- Adverse childhood experiences have lifelong impacts on physical and mental health.
- Racial, geographic, economic, and health inequities emerge early in childhood.
- The COVID-19 pandemic had strong impacts on children including increased abuse and neglect, decreased access to healthcare, and interruptions to school and school meals, leading to an increase in food insufficiency.

Priority Area Options

Child Health Domain

Developmental
screening



Medical home



Physical
activity



Food
insufficiency



Housing
instability



Dental
Health





Food Insufficiency

Child Health Domain





Medical Home

Child Health Domain



Adolescent Health Domain



Overview

Adolescent Health Domain

This population includes adolescents from 10 to 24 years old.

Key issues include:

- Systematic racism and oppression continue to create barriers for Black, Indigenous, and adolescents of color, LGBTQ2SIA+ adolescents, and adolescents with disabilities.
- High rates of unmet physical health and mental/emotional health needs, with higher rates of unmet need among students with disabilities and LGBTQ2SIA+ students.
- More than half of Oregon households containing adolescents experienced rent burden.

Priority Area Options

Adolescent Health Domain

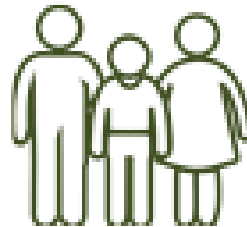
Adolescent
well care



Adolescent
mental health



Connection
to adults



Transition to
adult care



Bullying
prevention



Dental
health





Adolescent Mental Health

Adolescent Health Domain



Community Identified State Priorities



Priority Area Options

Community Identified State Priorities

- Access to culturally responsive and trauma-informed care
- Parent and caregiver support
- Child care
- Substance use (Impact on women and children)
- Safe and healthy environments
- Food insufficiency
- Housing instability

Access to culturally responsive and trauma informed care

Community Identified State Priorities



Parent and caregiver support

Community Identified State Priorities



Safe and healthy environments

Community Identified State Priorities



Next Steps

- ❖ Block Grant Writing – Now through July 2025
- ❖ Strategy Development – Aug – Dec 2025
- ❖ TA to grantees – Jan – March 2026

Questions, comments?

For general MCAH Title V questions:

Nurit Fischler

Nurit.r.fischler@oha.Oregon.gov

Allison Potter

Allison.K.Potter@oha.oregon.gov

For Needs Assessment questions:

Maria Ness

Maria.N.Ness@oha.oregon.gov

