

OREGON'S PUBLIC HEALTH SYSTEM

Wednesday, December 7, 2022

2:00 – 4:00 PM | Webex

This webinar is being recorded



SCHOOL OF
PUBLIC HEALTH



Coalition of Local Health Officials

Webinar Series

- Three-session webinar series on Oregon's public health system



- Earn CPH credits!
- Interactive knowledge checks
 - Go to [Menti.com](https://www.menti.com) on your computer or phone
 - Enter 1195 9445

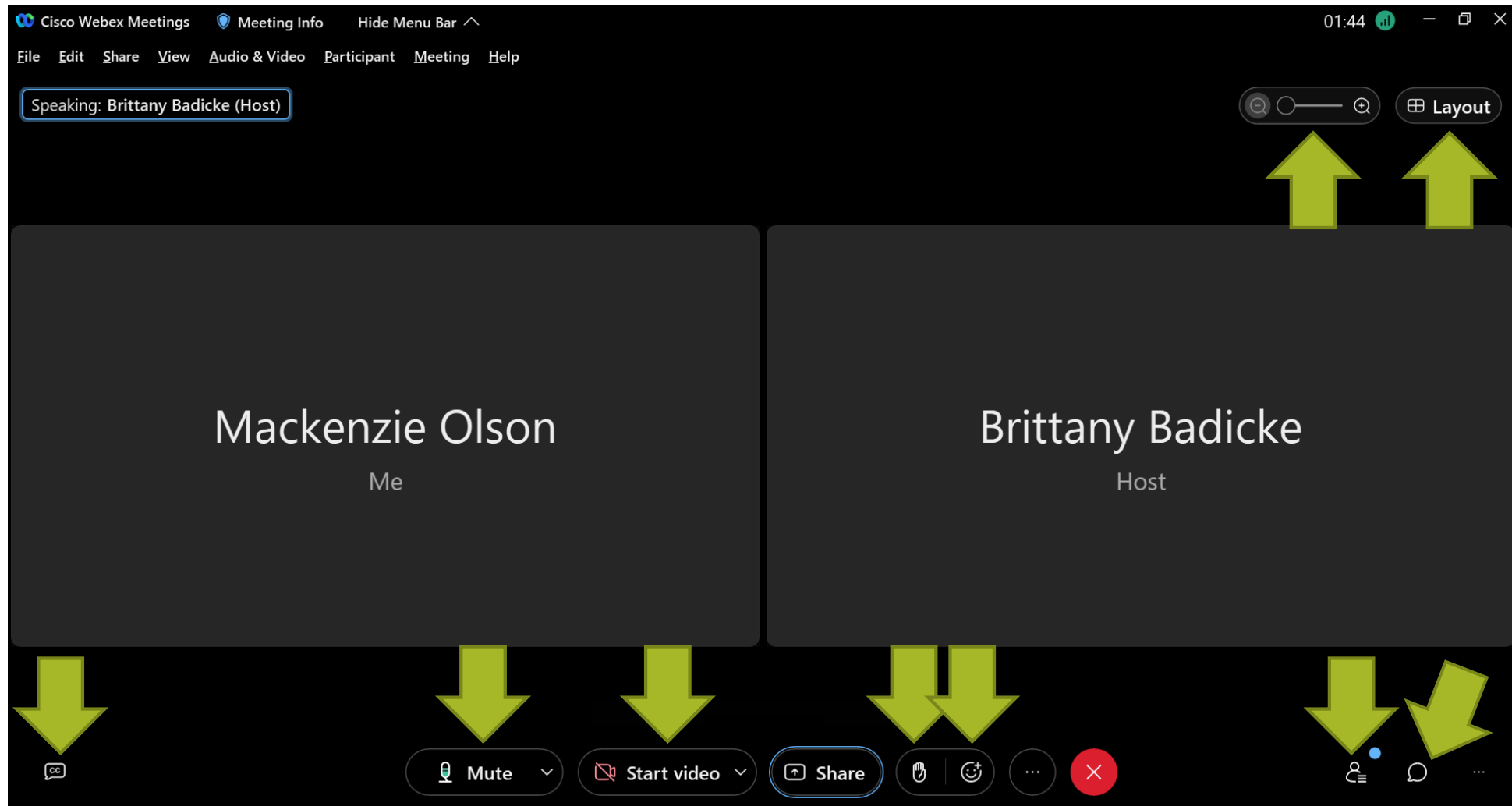
Agenda

Time	Topic	People
2:00 PM	Welcome	Brittany Badicke
2:10 PM	The Governmental Public Health System	Danna Drum & Jennifer Little
2:35 PM	Conference of Local Health Officials	Laura Daily & Danna Drum
2:45 PM	Public Health Modernization	Sara Beaudrault
2:55 PM	Partners and Supportive Public Health Organizations	Laura Daily
3:10 PM	Health Equity and the Role of Community-Based Organizations	Dolly England
3:30 PM	Questions, Resources, and Wrap-up	Brittany Badicke

Speakers

- **Danna Drum, MDiv** | Local and Tribal Public Health Manager, Office of the State Public Health Director, Oregon Health Authority
- **Dolly England** | Community Engagement Program Manager, Office of the State Public Health Director, Oregon Health Authority
- **Jennifer Little, MPH** | Public Health Director, Klamath County Public Health
- **Laura Daily, MPH** | Program Manager, Oregon Coalition of Local Health Officials
- **Sara Beaudrault, MPH** | Public Health Modernization Lead, Office of the State Public Health Director, Oregon Health Authority

Navigating Webex



Introductions

- Name
- Organization / School
- Role
- What are you looking forward to in today's webinar?

Acronyms

Take a screenshot for reference:

- MacOS: Command + Shift + 4 = click and drag to select area
- Windows: Print Screen (PrtScn)

CBO: Community-based Organization

CCO: Coordinated Care Organization

CHA: Community Health Assessment

CHIP/CHP: Community Health Improvement Plan

CLHO: Conference of Local Health Officials (statutory)

CLHO: Coalition of Local Health Officials (advocacy)

FQHC: Federally Qualified Health Center

LPHA: Local Public Health Authority

OHA: Oregon Health Authority

OPHA: Oregon Public Health Association

OPHI: Oregon Public Health Institute

ORS: Oregon Revised Statutes

PHAB: Public Health Accreditation Board (nationally)

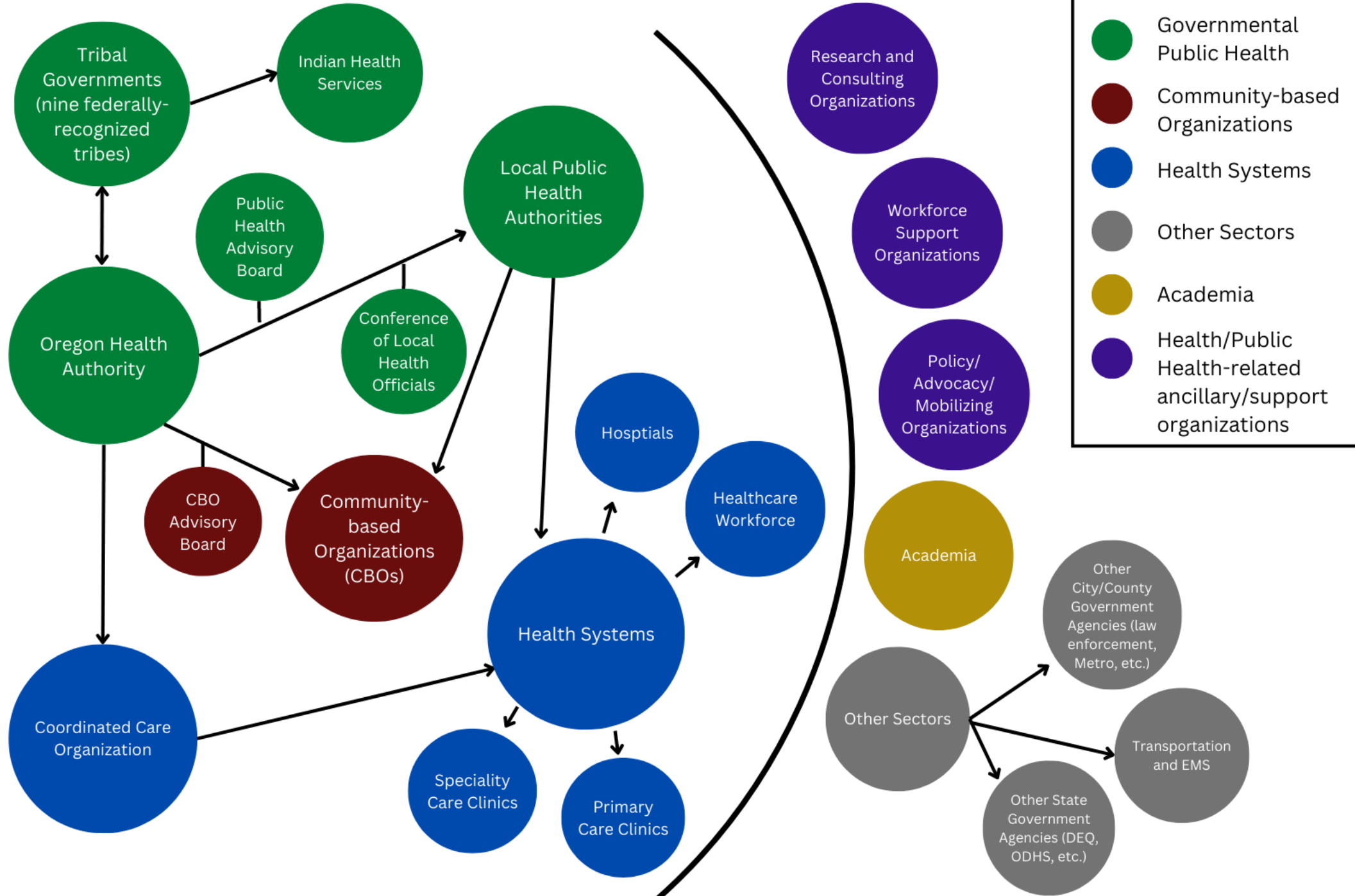
PHAB: Public Health Advisory Board (in Oregon)

PHM: Public Health Modernization

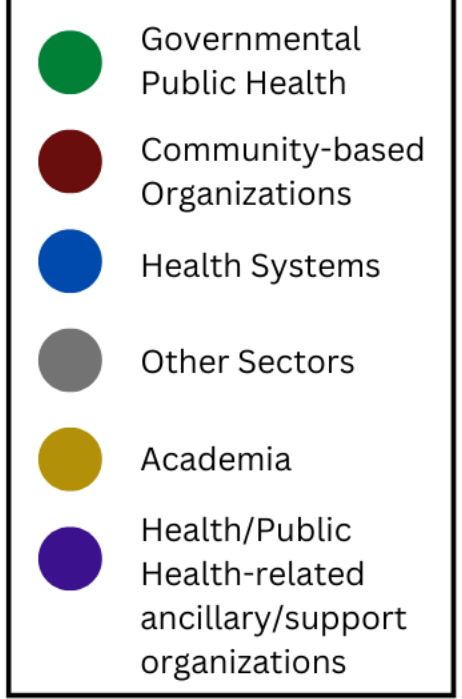
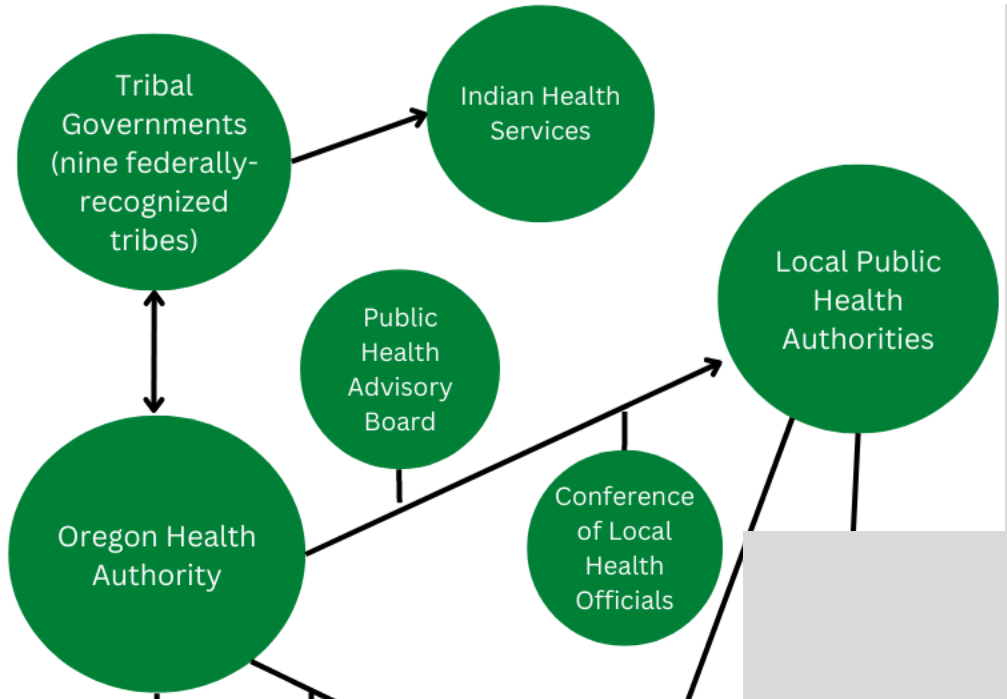
RHC: Rural Health Clinic



Oregon's Public Health System



Oregon's
Public
Health
System



Governmental Public Health System in Oregon

Danna Drum

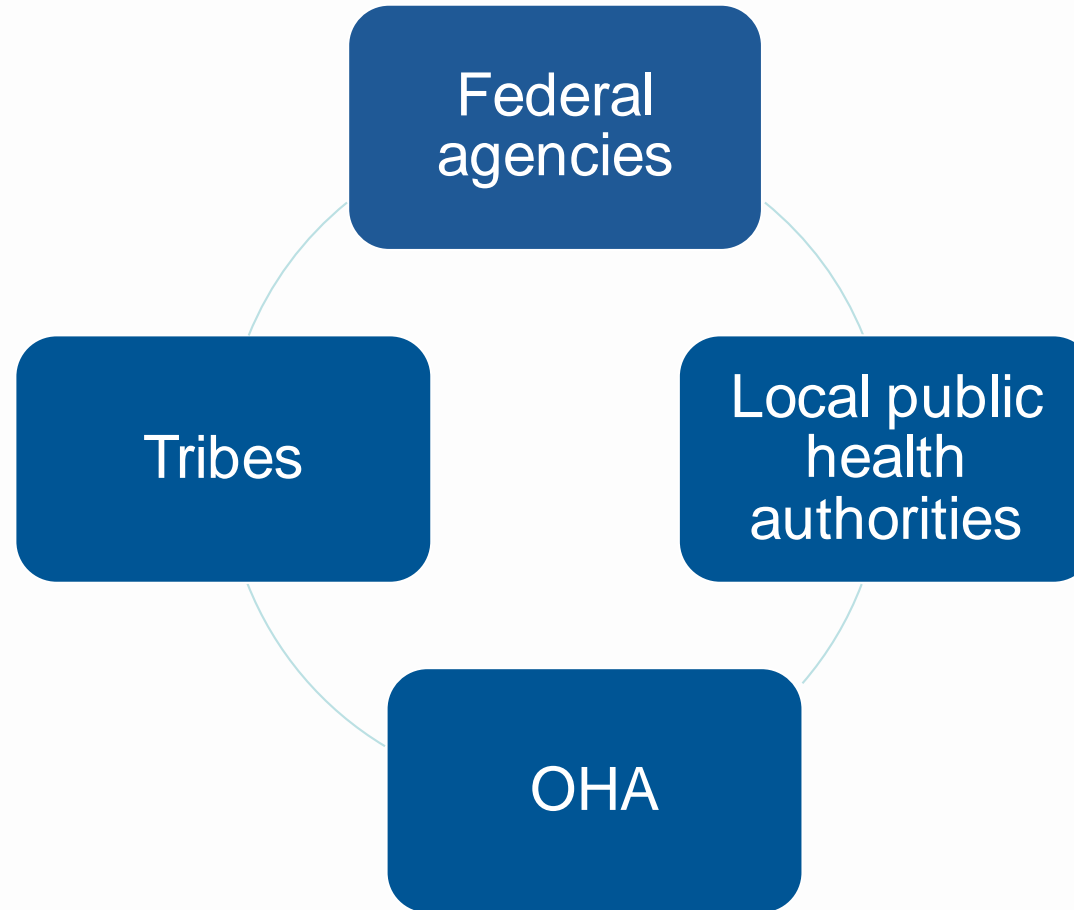
Local and Tribal Public Health Manager
Office of the State Public Health Director

December 7, 2022

The logo for the Oregon Health Authority. It features the word "Oregon" in a smaller, orange, serif font positioned above the "e" in "Health". The word "Health" is in a large, dark blue, serif font. Below "Health", the word "Authority" is written in a smaller, orange, serif font. The entire logo is set against a light blue, curved background.

Oregon
Health
Authority

Governmental Public Health in Oregon



Federal Agencies



OFFICE OF THE STATE PUBLIC HEALTH DIRECTOR
Public Health Division



Role of Federal Agencies

- Implementation of federal law
- Promulgation of federal rules
- Funding and related requirements
- Public health guidance
- Some data reporting

Oregon Health Authority

- “Super Agency” that houses state public health
 - Part of Executive Branch of state government
 - OHA Public Health Division
- Implementation of Oregon Revised Statutes
- Promulgation and implementation of Oregon Administrative Rules
- Program Implementation and Oversight
- State Public Health Authority
 - State Public Health Director
 - State Public Health Officer

OFFICE OF THE STATE PUBLIC HEALTH DIRECTOR
Public Health Division

PUBLIC HEALTH DIVISION

Public Health Director
Rachael Banks, MPA

Office of the State Public Health Director

Deputy Public Health Director, Policy and Partnerships Director
Cara Biddlecom, MPH

**Equity Director
COVID-19 Response & Recovery Unit**
Erica Sandoval, MPH

Fiscal Director
Nadia Davidson

Operations Director
Kirsten Aird, MPH

**Science and Evaluation
State Health Officer and
State Epidemiologist**
Dean Sidelinger, MD, MSED

Lead Communication Officer
Jonathan Modie

Senior Policy Advisor
Cynthia Branger Muñoz

Center for Health Protection
Center Administrator
André Ourso, MPH, JD

Drinking Water Services
Section Manager,
Karyl Salis

Environmental Public Health Section
Section Manager,
Gabriela Goldfarb, MPP

Health Care Regulation and Quality Improvement Program
Section Manager,
Dana Selover, MD

Health Licensing Office
Section Manager,
Robert Bothwell

Oregon Medical Marijuana Program
Section Manager,
Megan Lockwood

Oregon Psilocybin Services Program
Section Manager,
Angela Allbee, EMPA

Radiation Protection Services
Section Manager,
David Howe, MA

Center for Prevention and Health Promotion
Center Administrator
Timothy Noe, PhD

Adolescent, Genetic and Reproductive Health Section
Section Manager,
Helene Rimberg, PsyD

Health Promotion and Chronic Disease Prevention Section
Interim Section Manager,
Tatiana Dierwechter, MSW

Injury & Violence Prevention Section
Section Manager,
Laura Chisholm, MPH, PhD

Maternal and Child Health Section
Section Manager,
Cate Wilcox, MPH

Nutrition and Health Screening (WIC Program)
Section Manager,
Tiare Sanna, MS, RDN

Center for Public Health Practice
Center Administrator
Collette Young, PhD

Acute and Communicable Disease Prevention Section
Section Manager,
Zintars Beldavs, MS

Center for Health Statistics
Section Manager,
Jennifer Woodward, PhD

HIV, STD & TB Section
Section Manager, Annick Benson-Scott

Health Security, Preparedness & Response
Interim Section Manager,
Eric Gebbie

Immunization Section
Interim Section Manager,
Lydia (Mimi) Luther

Oregon State Public Health Laboratory
Director,
John Fontana, PhD, (HCLD) ABB

COVID Response & Recovery Unit (CRRU)
CRRU Director
Akiko Saito

CRRU Response
Co-Deputy Director,
Melissa Powell

Case Support Section

Intervention Section
Heather Kaisner

Surveillance Section
Sharon Anderson

CRRU Operations
Co-Deputy Director,
Aaron Dunn

Vaccine Operations

Field Operations Section
Kassie Clarke

Therapeutics Section
Amani Atallah

Oregon Tribal Governments

- Burns Paiute Tribe
- Confederated Tribes of Coos, Lower Umpqua and Siuslaw Indians
- Confederated Tribes of Grand Ronde
- Confederated Tribes of Siletz Indians
- Confederated Tribes of the Umatilla Indian Reservation
- Confederated Tribes of Warm Springs
- Coquille Indian Tribe
- Cow Creek Band of Umpqua Tribe of Indians
- Klamath Tribes



Federally-recognized Tribes

- Tribal sovereignty
- Tribal public health authority
- May have public health laws written into tribal legal code
- State public health law doesn't necessarily apply to Tribes and Tribal Lands, but this is very nuanced
- Tribal Health Directors
- Tribal Council

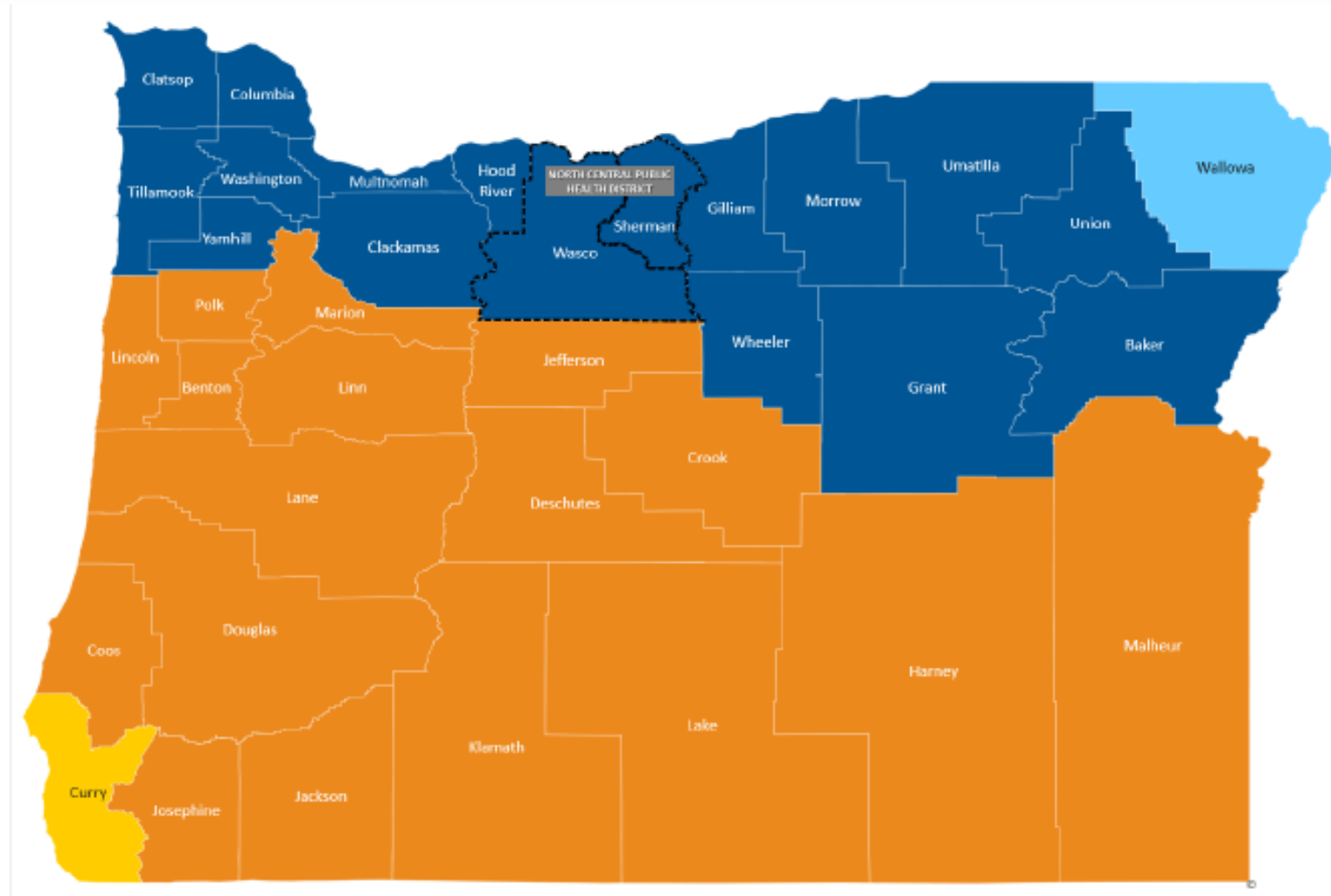
OHA's Working Relationship with Tribes

- Government to Government Relationship
- Based on political status (sovereignty), not racial status
- “SB 770” – Oregon Revised Statutes
- OHA Tribal Consultation Policy
- SB 770 Health Cluster Meetings
- OHA Tribal Monthly Meetings
- Formal Tribal Consultation

To Learn More About Tribes

- *Broken Treaties*, Oregon Public Broadcasting; <https://www.opb.org/television/programs/oregon-experience/article/broken-treaties-oregon-native-americans/>
- Tribal Websites and Museums
- National Congress of American Indians; www.ncai.org
Tribal Nations & the United States: An Introduction;
<https://www.ncai.org/about-tribes>
- *This Land* Podcast, Crooked Media; <https://crooked.com/podcast-series/this-land/>

Local Public Health Authorities



OFFICE OF THE STATE PUBLIC HEALTH DIRECTOR
Public Health Division

What is an LPHA?

- LPHA = Local public health authority
 - A county government
 - A health district formed under ORS 431.443 by two or more contiguous counties
 - Intergovernmental entity that provides public health services pursuant to an agreement under ORS 190.010
- Governing Body of LPHA
 - Governing body of a county (Board of County Commissioners)
 - A district board of health
 - Board of intergovernmental entity formed under ORS 190.010

Local Public Health Authority

- Local public health authorities get their authority from statute (see ORS 431) and for most things delegation of authority from OHA is not necessary.
- OHA does delegate authority in the following instances:
 - Tourist facilities
 - Pool facilities
 - Restaurants and bed and breakfast facilities
 - Commissaries, mobile units, warehouse and vending machines.

Key Roles within an LPHA

- Local Public Health Administrator – enforcement authority
- Local Public Health Officer

Public Health Services in Oregon

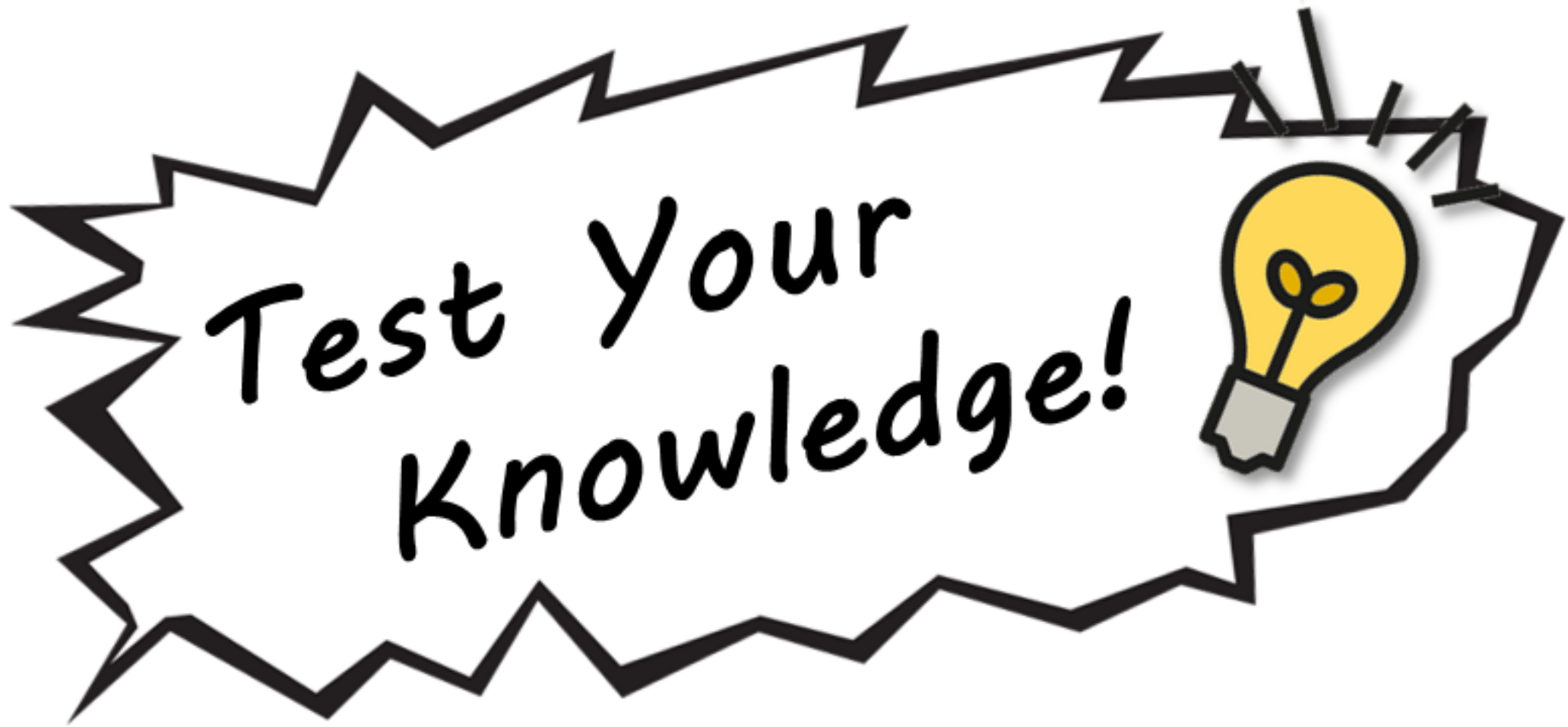
- Some public health services delivered by county government
 - Public health department
 - Division within a health and human services agency
- In some jurisdictions, county government does PH responsibilities that only government can do and the county contracts with one or more entities to provide PH services
- Some LPHAs do not provide any clinical services and rely on community partners for these services

Public Health Services in Oregon

- Two counties have transferred public health authority to OHA
 - Wallowa and Curry
 - OHA responsible for limited public health services
- Public health looks different across the state so it's important to understand how public health is structured in your community

LPHAs and OHA

- LPHAs are generally independent of the Oregon Health Authority – decentralized public health system
- OHA and LPHAs work closely together
 - Conference of Local Health Officials
- OHA has intergovernmental agreements with LPHAs for funding and PH activities
- While ORS states there is an OHA supervisory role with LPHAs, OHA does not have blanket authority over LPHAs





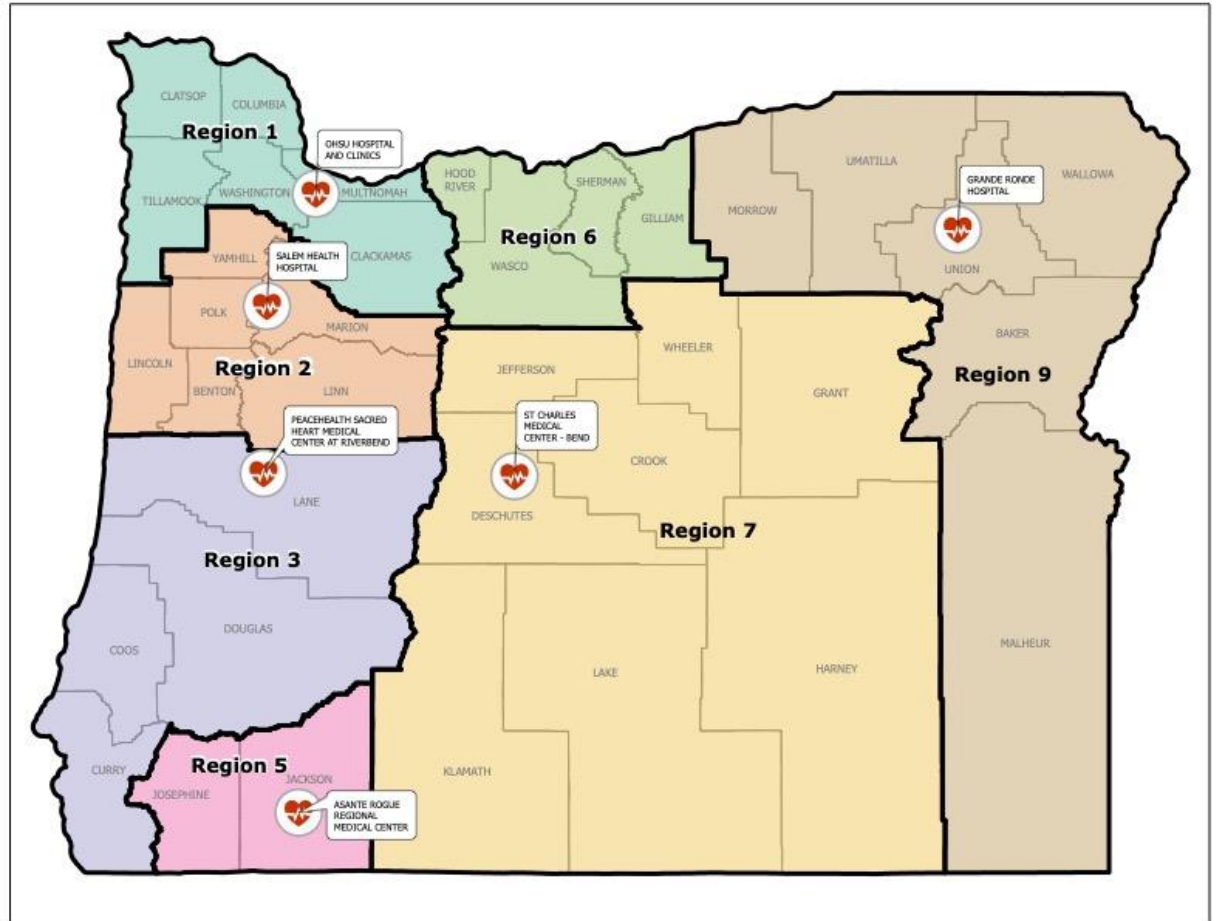
Governmental Public Health: Local Public Health Authorities

When you've seen
one public health
department, you've
seen one public
health department...



Working Across County Lines

- Regions for emergency response
- Shared projects/positions/services
 - Regional Community Health Assessments/ Community Health Improvement Plans (CHA/CHIP)
 - Regional epidemiologists, climate and health coordinators, and public health nurses
 - Shared environmental health program
- Border counties collaborate with other states





Remember: when you've seen one health department, you've seen one health department.

Not all LPHAs offer all the services listed here.

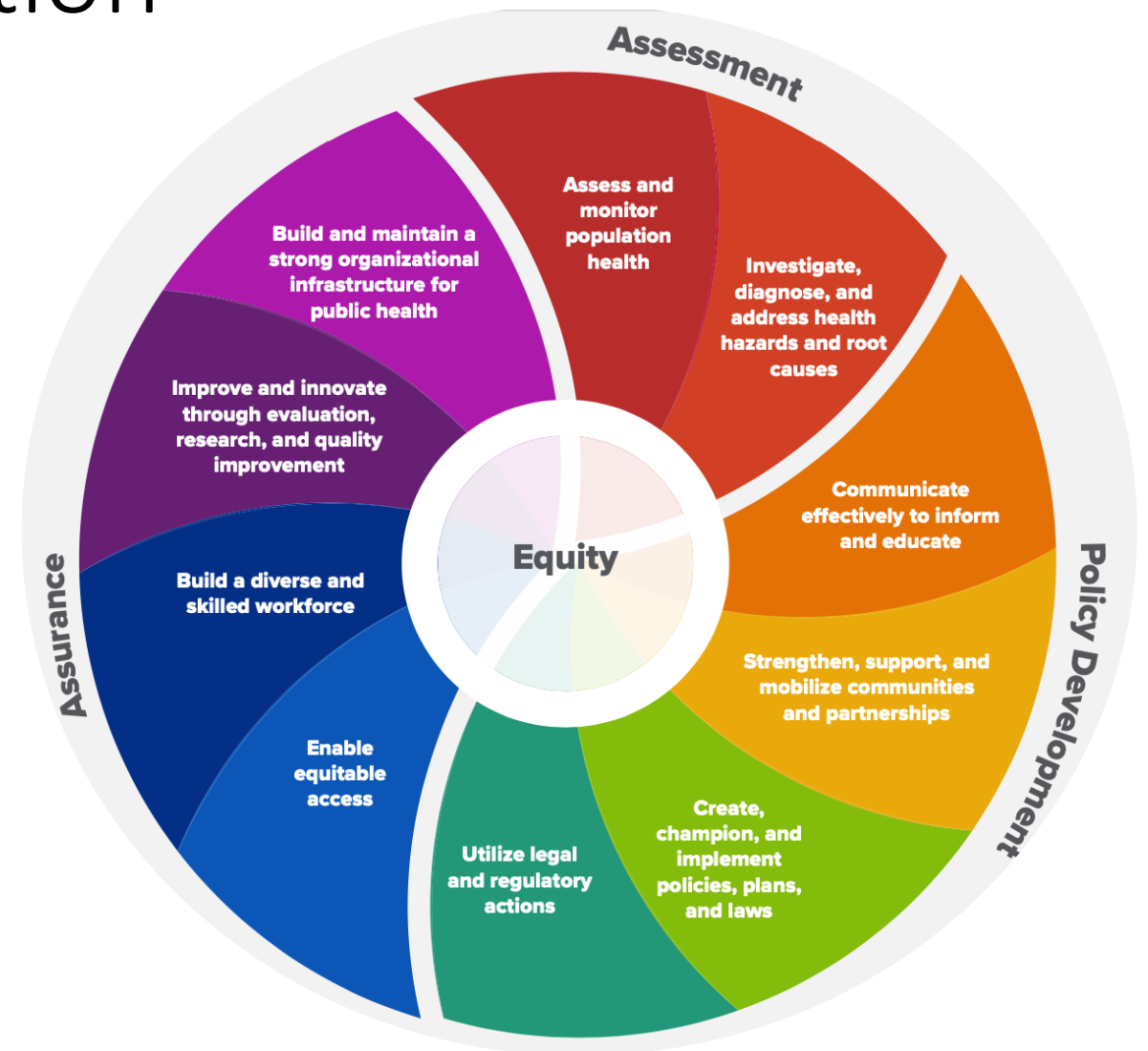
- Some counties may house certain programs (like EH) in a different department.
- Some LPHAs contract with health providers or CBOs to provide these services.
- LPHAs may structure their health departments differently.
- LPHAs and OHA use program elements (PEs) as contracts for how many of these services will be delivered – [available here](#).

Public Health Accreditation

“Accreditation measures a health department’s performance against a set of nationally recognized, practice-focused, and evidence-based standards.”

[Public Health Accreditation Board \(PHAB\), 2022](#)

- Accreditation began in 2011 (the OHA, 14 LPHAs, and 1 tribe are now accredited)
- Once LPHAs become accredited, they apply for reaccreditation every 5 years
- 2022 Measures & Standards: 10 domains that align with the 10 Essential Public Health Services
- Accreditation is meant to enhance an LPHAs performance, create continuous quality improvement, and standardize public health services across all LPHAs



Community Health Assessments and Improvement Plans (CHAs/CHIPs)

[PHAB Standard 1.1](#): Participate in or lead a collaborative process resulting in a comprehensive **community health assessment (CHA)***

- Provides LPHAs and all community partners with valuable data on health status, factors, and outcomes
- Points to the resources available to address health concerns
- A community health assessment can be translated into an action-oriented community health improvement plan (CHIP or CHP) that outlines long-term strategies and identifies indicators to measure progress
- All Oregon CHA/CHIPs available via the [OHA Transformation Center webpage](#)

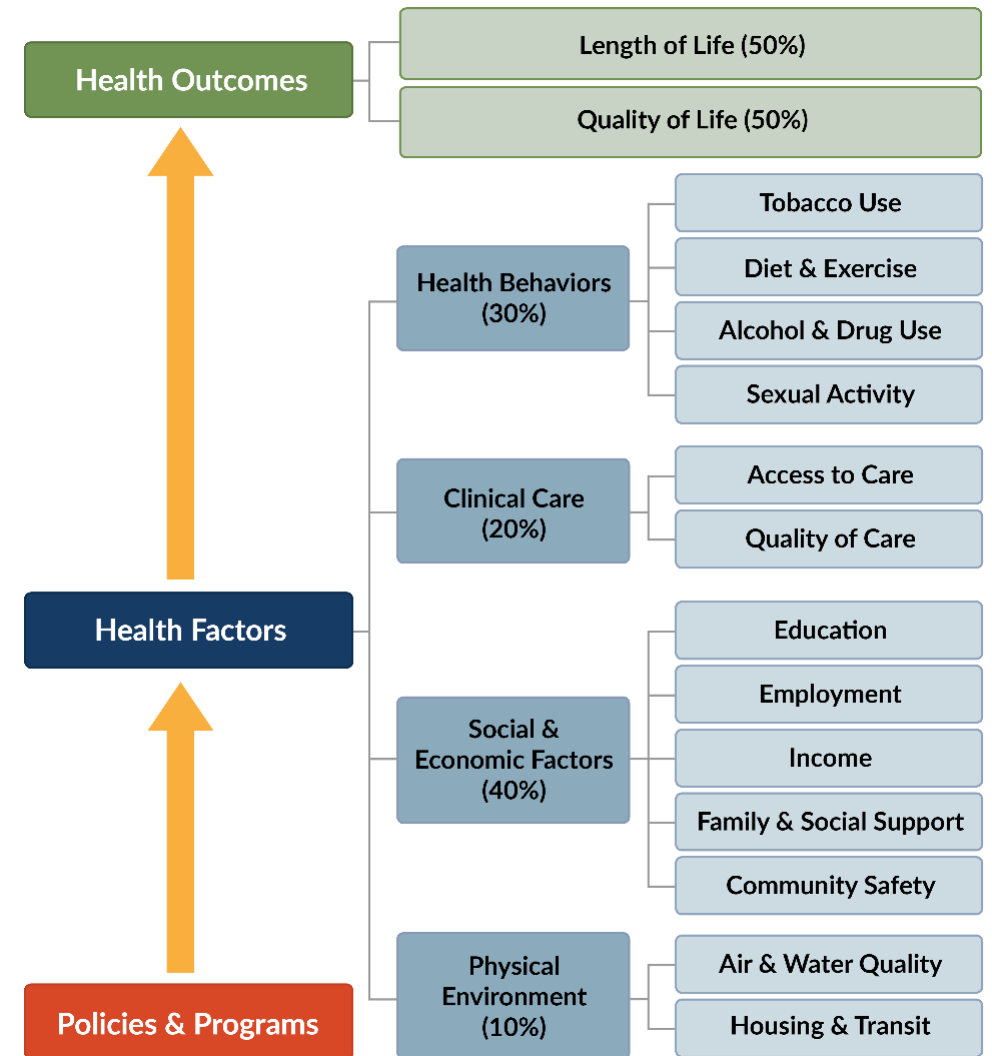
*LPHAs are not currently required to complete a CHA/CHIP unless they are pursuing (re)accreditation. When [ORS 431.131](#) (Public Health Modernization) is fully implemented, LPHAs will be required to complete a CHA/CHIP.



Robert Wood Johnson Foundation
Culture of Health Prize 2018

Criteria

- In order to win the prize, a community has to demonstrate excellence in each of 6 categories:
 - Defining health in the broadest possible terms.
 - Committing to sustainable systems changes and policy-oriented long-term solutions.
 - Creating conditions that give everyone a fair and just opportunity to reach their best possible health.
 - Harnessing the collective power of leaders, partners, and community members.
 - Securing and making the most of available resources.
 - Measuring and sharing progress and results.



County Health Rankings model © 2014 UWPHI

Key Accomplishments: Policy, People, Places

- Food Systems
- Klamath Promise
- Public Safety
- Built Environment
- Tobacco Policy
- Health Equity
- Klamath Works
- Rural Campus
- Data Sharing



Test Your
Knowledge!



Conference of Local Health Officials 1



Exists in Oregon Revised Statutes ([ORS 431.330](#))



Forum for Oregon Health Authority and Local Public Health Authorities (LPHAs) to discuss foundational programs/capabilities, funding, program elements, and other governmental public health issues (described in [ORS 431.340](#)).

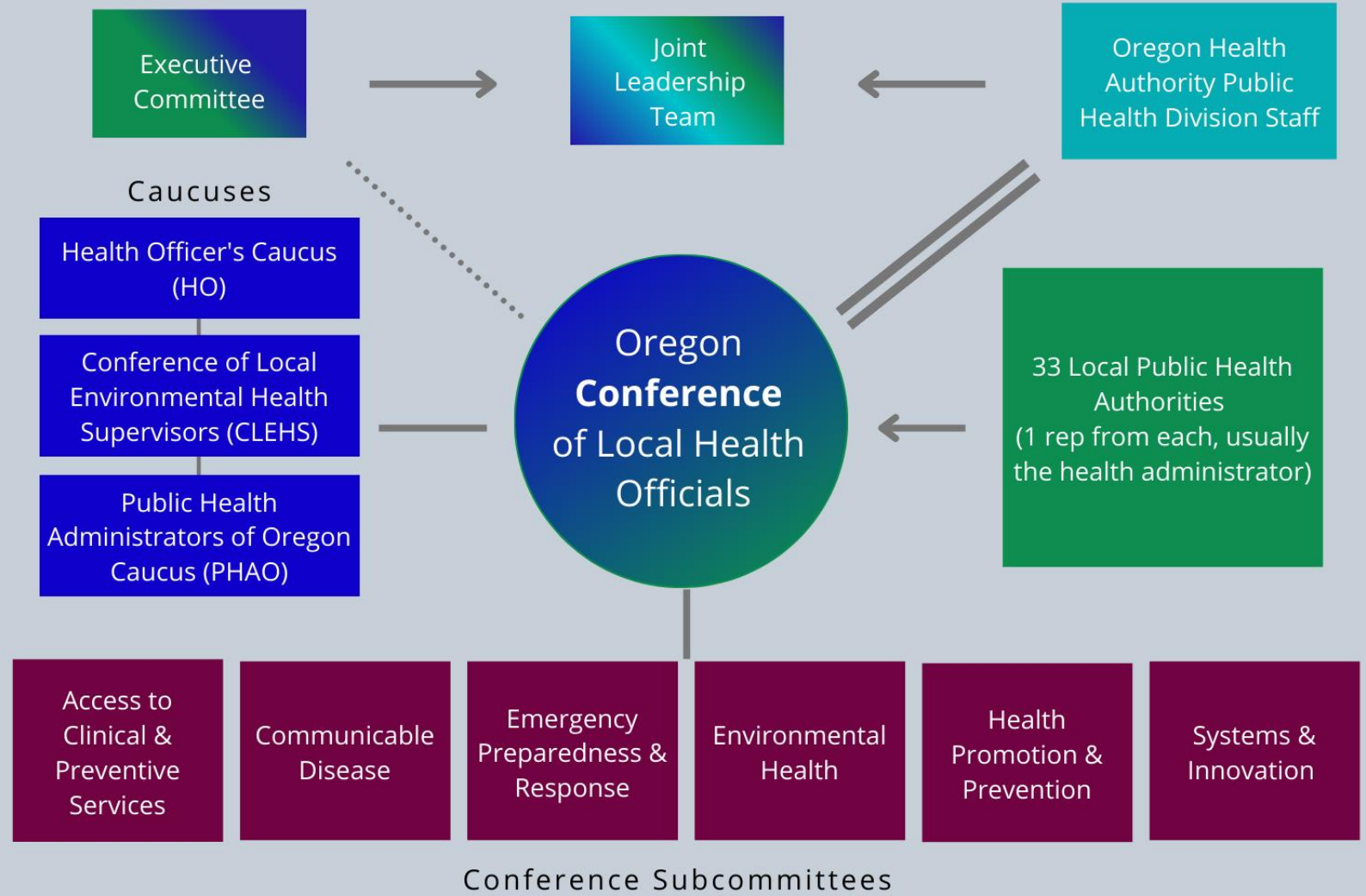


The Board (“Big CLHO”) is made up of the local health administrators (33) and caucus representatives (meets the 3rd Thursday of every month - [public meeting](#))

Conference of Local Health Officials 2

- 6 subcommittees that make recommendations to the the Board:
 - Access to Clinical and Preventive Services (A2CPS)
 - Communicable Disease (CD)
 - Environmental Health (EH)
 - Emergency Preparedness and Response (EPR)
 - Health Promotion and Prevention (HPP)
 - Systems and Innovation (S&I)
- Committee members (subject-matter experts) are appointed by health administrator (approved at Big CLHO) for 2-year appointments

Oregon Conference of Local Health Officials (CLHO)

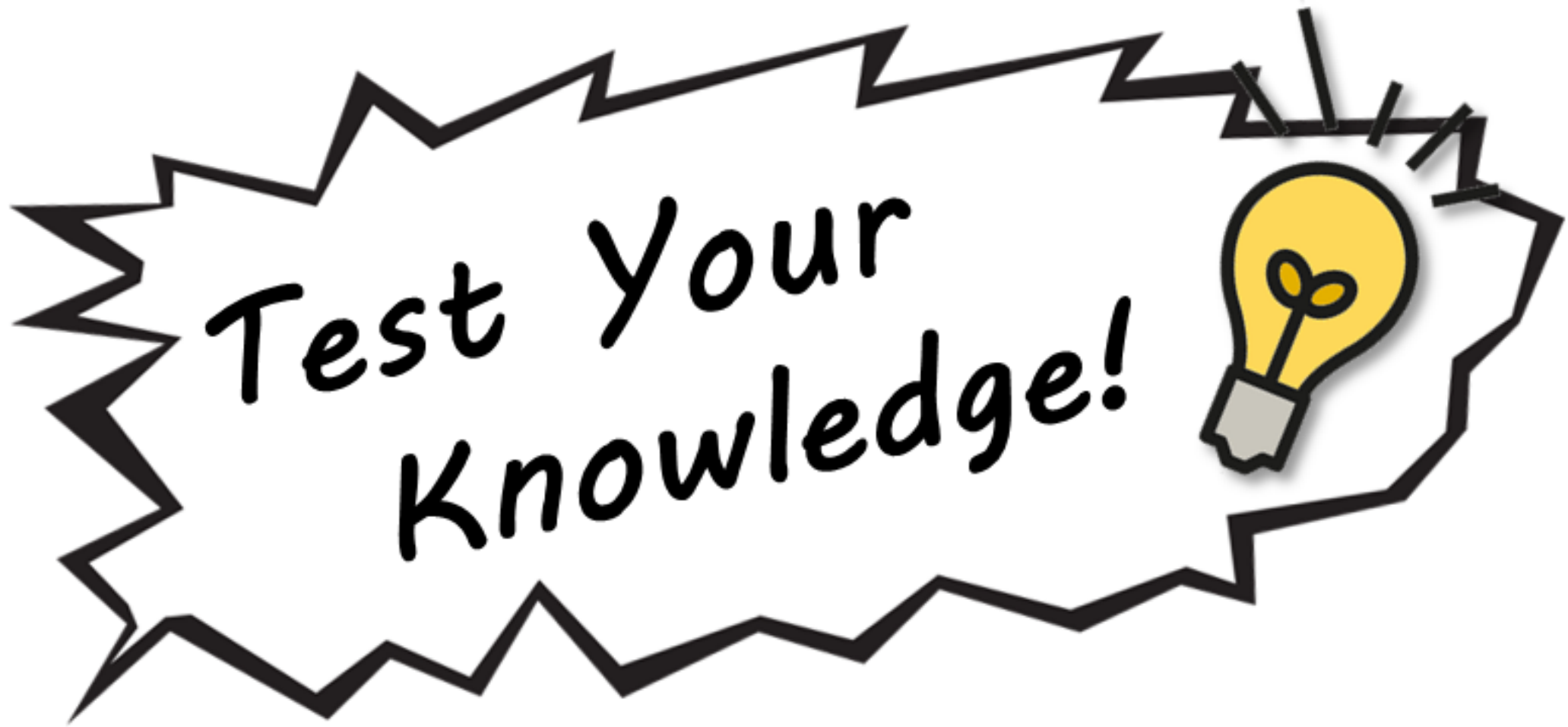


Conference of Local Health Officials 3

Key
 Member ←
 Committee/Caucus —
 Elected
 Statutory ==

For more information about the Conference of Local Health Officials, visit bit.ly/3VsQpGf or scan the QR code





Modernizing Oregon's public health system

Sara Beaudrault
Office of the State Public Health Director

December 7, 2022



OFFICE OF THE STATE PUBLIC HEALTH DIRECTOR
Public Health Division

Modernized framework for governmental public health services



Program-based vs. Modern Public Health

Program-based Health System	Modern Public Health System
Separate funding and staff for each disease or other health topic	Funding and staff can adapt and respond as critical health needs emerge
Responds to health problems	Strives to prevent and prepare for health problems, then responds as needed
Works independently	Emphasizes partnerships
Health disparities unaddressed	Centers the voices of communities and strives to shift power and resources to those most affected by health inequities
Data systems are static, isolated from each other, and/or difficult to use	Data systems are complete, dynamic and integrated, and generate useful info
Patchwork quilt of programs and capabilities	All foundational programs and capabilities available across the state

Public health modernization investments since 2017, in millions

	2017-19	2019-21	2021-23
LPHAs	\$3.9	\$10.3	\$33.4
Tribes	\$0	\$1.1	\$4.4
CBOs	\$0	\$0	\$10
OHA	\$1.1	\$4.2	\$12.8
Total	\$5	\$15.6	\$60.9

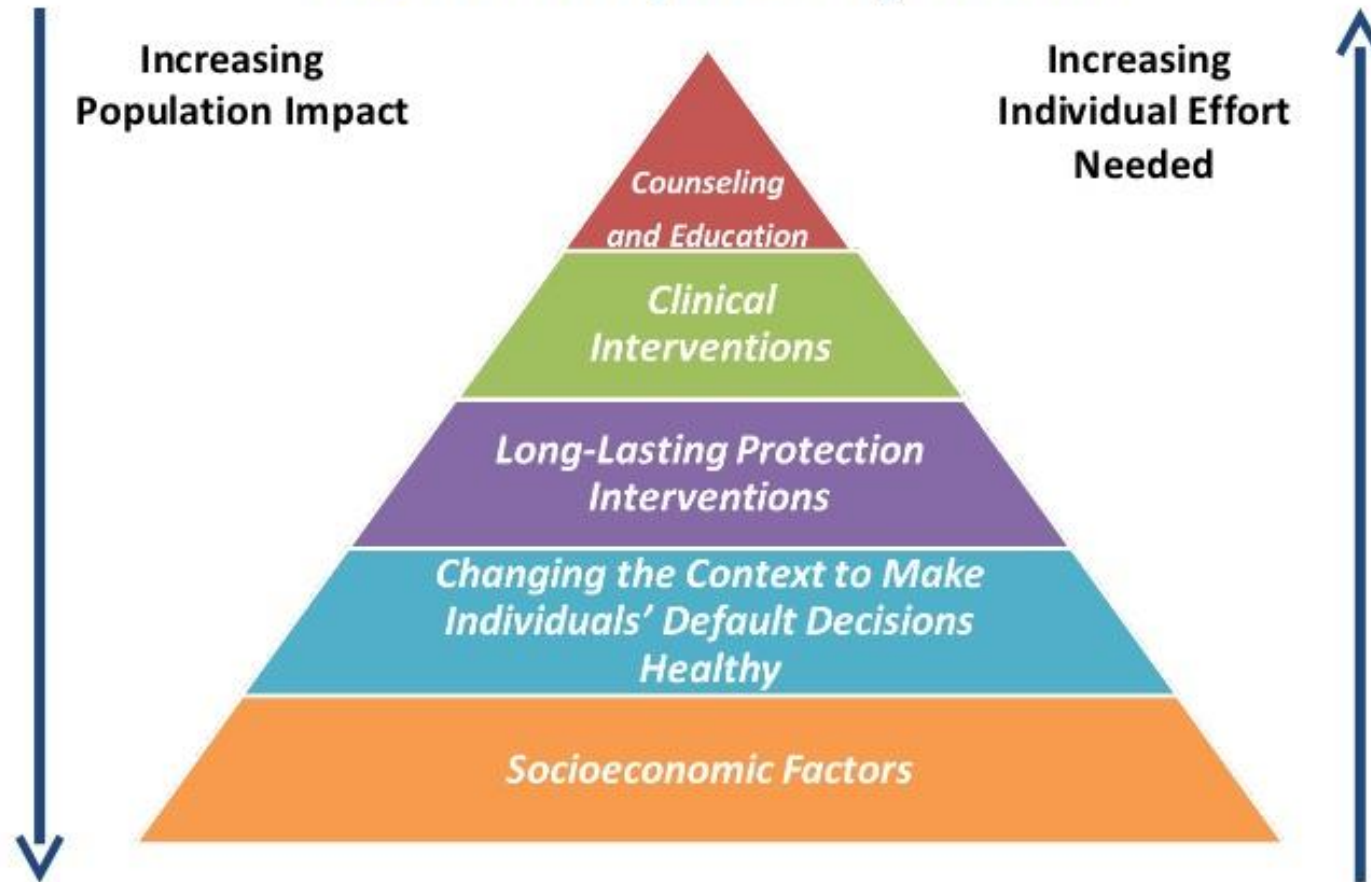
Public Health Advisory Board

- Established in Oregon statute and reports to the Oregon Health Policy Board.
- PHAB advises and makes recommendations for governmental public health.
- Reviews and makes recommendations on several processes related to Public Health Modernization including:
 - Setting priorities for PHM funding
 - Public health modernization funding formula
 - Public health accountability metrics

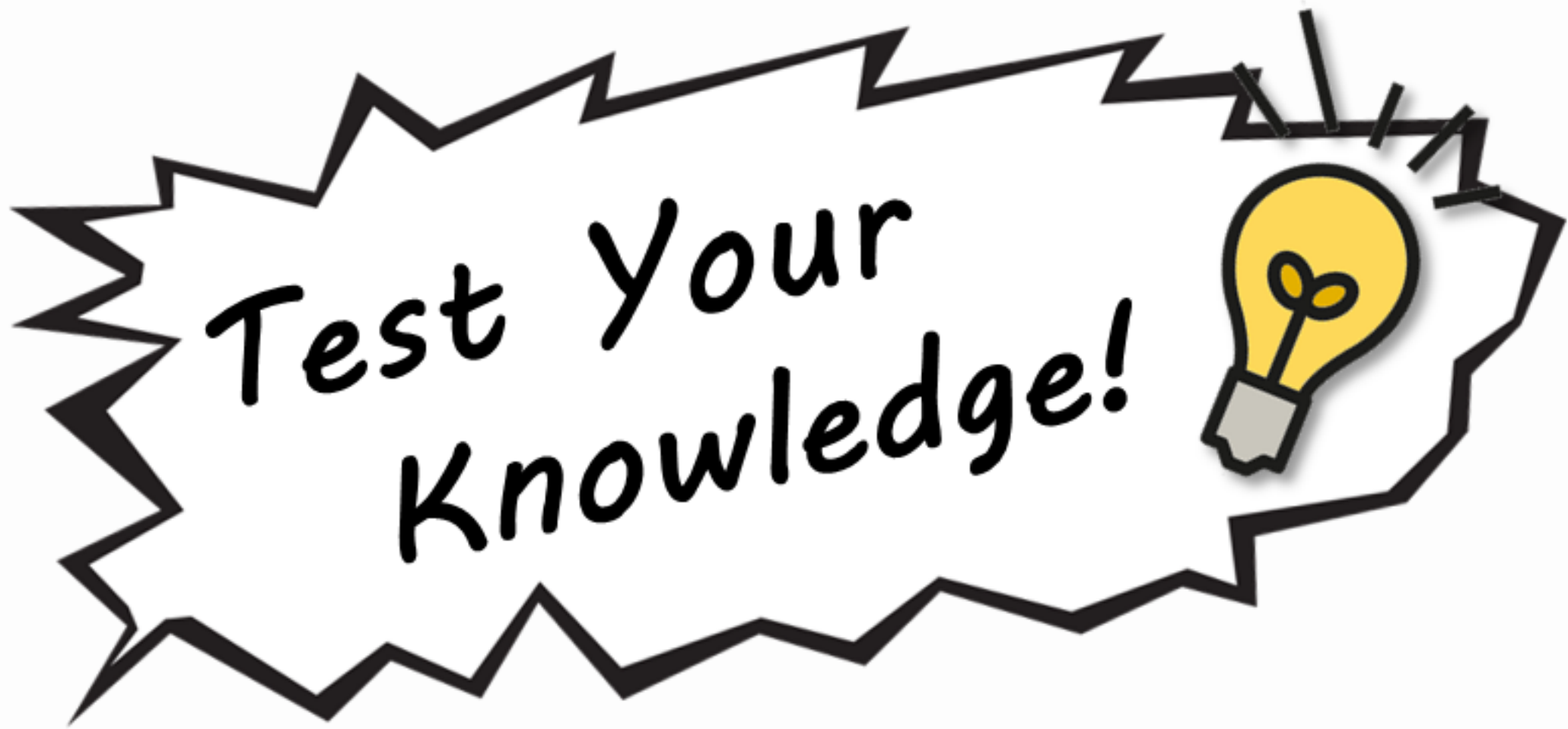
healthoregon.org/phab

[PHAB Health Equity Review Policy and Procedure](#)

Health Impact Pyramid



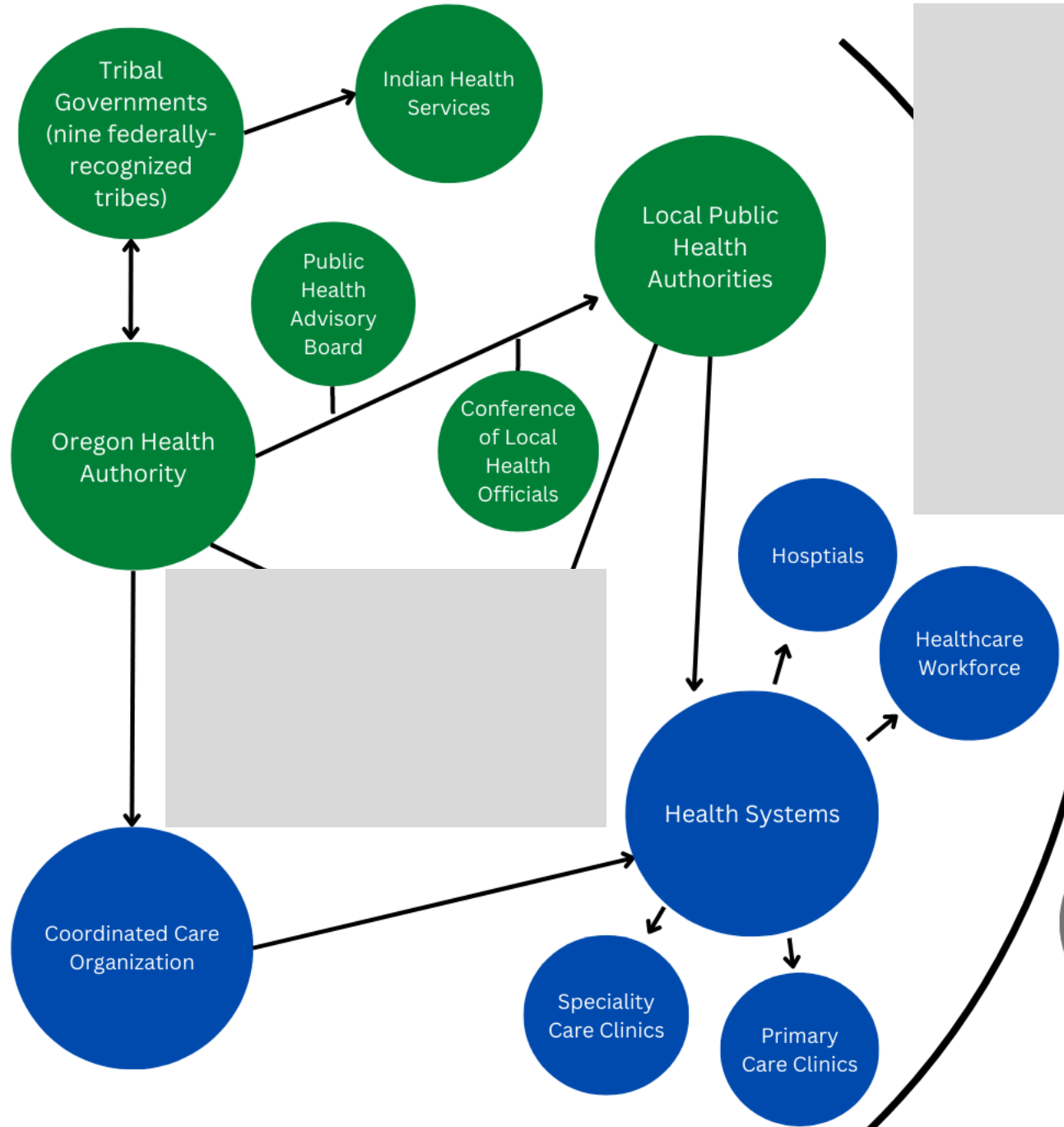
Frieden T. American Journal of Public Health | April 2010, Vol 100, No. 4





Partners and Supportive Public Health Organizations

Oregon's Public Health System



- Governmental Public Health
- Community-based Organizations
- Health Systems
- Other Sectors
- Academia
- Health/Public Health-related ancillary/support organizations

Partners and Supportive Public Health Organizations

These ancillary organizations cover a wide range of activities:

- Advocacy, policy development, and mobilizing partners/stakeholders
- Research/Consulting
- Workforce Support
- Or some combination of the above non-exhaustive list

Advocacy, Policy Development, and Mobilizing Organizations

Organizations with a focus on advocacy and policy development may:

- Build coalitions of like-minded individuals and organizations to pass policy or create systems change
 - [Oregon Health Equity Alliance](#) (OHEA)
 - [Our Children Oregon](#)
- Advocate directly to the Oregon Legislature for policy changes or funding (lobbying, testimony, legislator meetings, providing education)
 - [Oregon Coalition of Local Health Officials](#) (CLHO)

Research and Consulting Organizations

Organizations with a focus on research and consulting may:

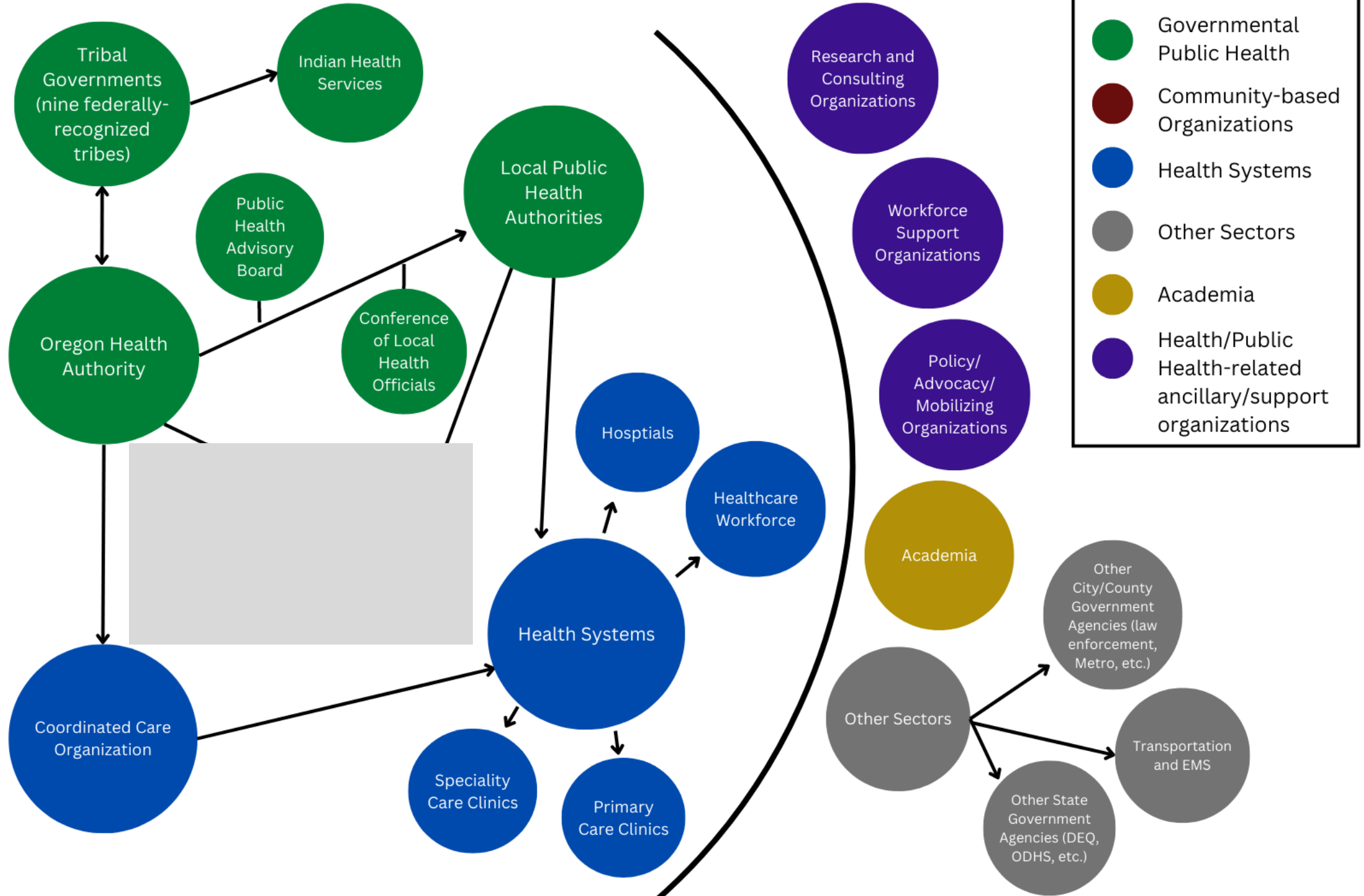
- Develop and conduct public health-focused research initiatives
 - [Oregon Center for Nursing](#) (OCN)
- Provide data to support health/public health organizations
 - [Northwest Portland Area Indian Health Board \(NPAIHB\)](#)
- Contract with public health organizations to provide consulting services
 - [Oregon Public Health Institute](#) (OPHI)
- Provide education and awareness around an issue (communications, training, resources and tools, etc.)
 - [American Cancer Society](#)
 - [American Heart Association](#)

Workforce Support Organizations

Organizations with a focus on workforce support may:

- Provide training programs and continuing education for a specific workforce
 - [Oregon Community Health Workers Association](#) (ORCHWA)
 - [Oregon Primary Care Association](#) (OPCA)
- Provide organizational and leadership support
 - [Tracing Health](#) through the Oregon Public Health Institute (OPHI)
- Provide networking and connection opportunities
 - [Oregon Public Health Association](#) (OPHA)
- Crossover: advocate for funding/policy to strengthen support for a sector and its workforce

Oregon's Public Health System



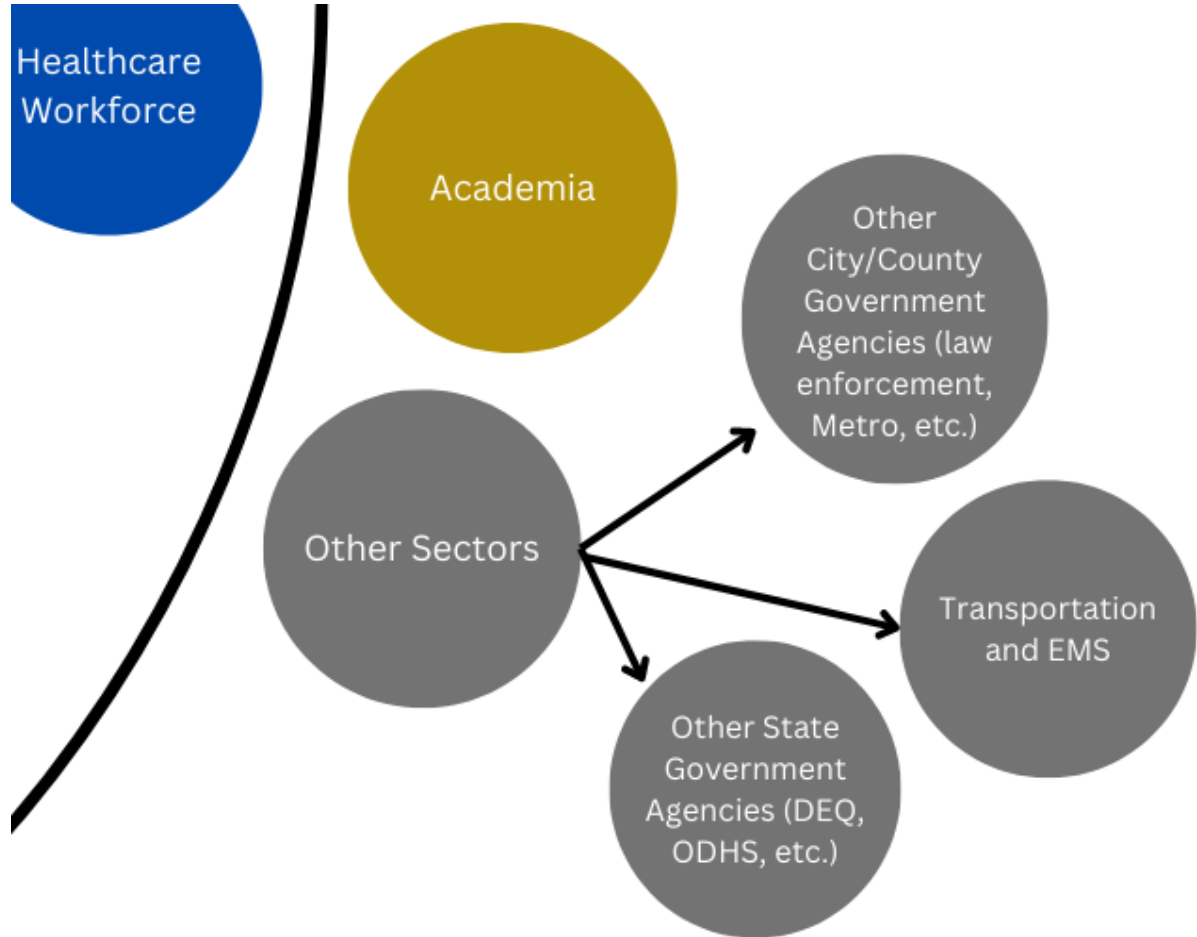
Academic Partners

Prepping the Future Public Health Workforce

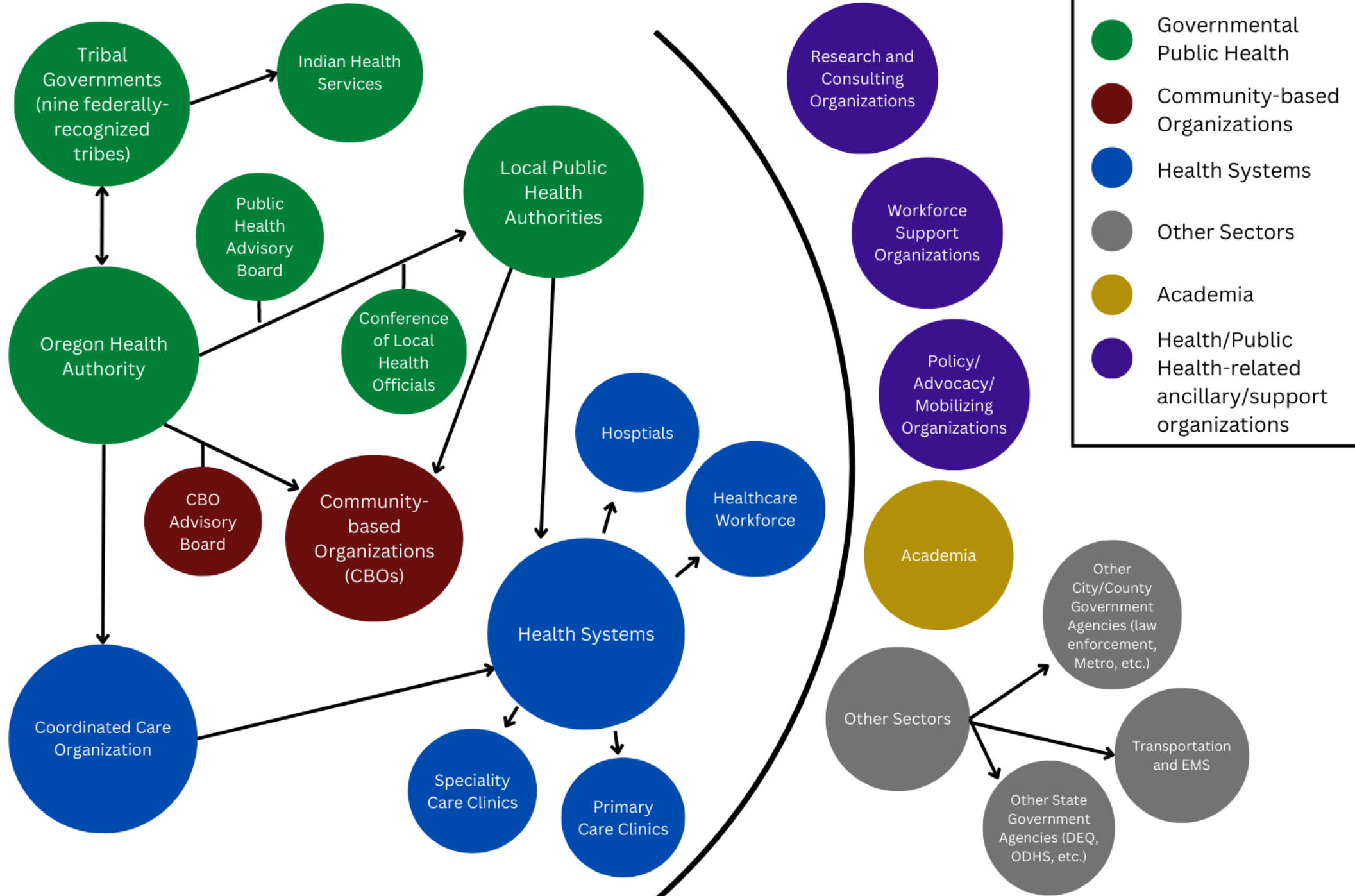
- [Oregon State University College of Public Health and Human Sciences](#)
- [Oregon Health and Science University - Portland State University School of Public Health](#)
- [Schools of Nursing](#)

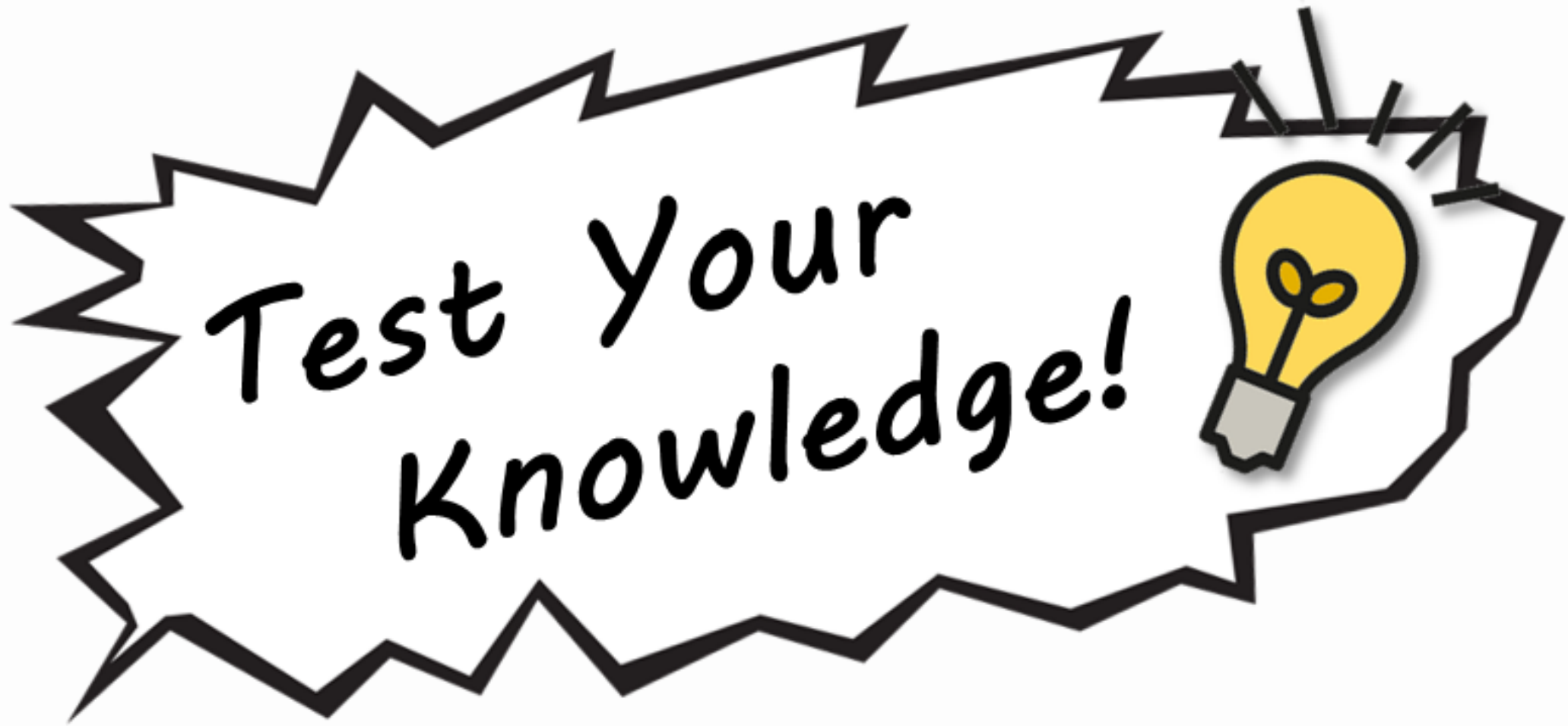
Partnering and Connecting

- [Oregon State University Center for Health Innovation](#)
- [Oregon Health and Science University Area Health Education Centers \(AHECs\)](#)
- [Oregon Office of Rural Health](#)
- [Oregon Rural Practice-based Research Network](#)
- [NorthWest Center for Public Health Practice \(NWCPHP\)](#) at University of Washington



Oregon's Public Health System





Community Based Organizations and Public Health Modernization

Dolly England
Office of the State Public Health Director

December 7, 2022

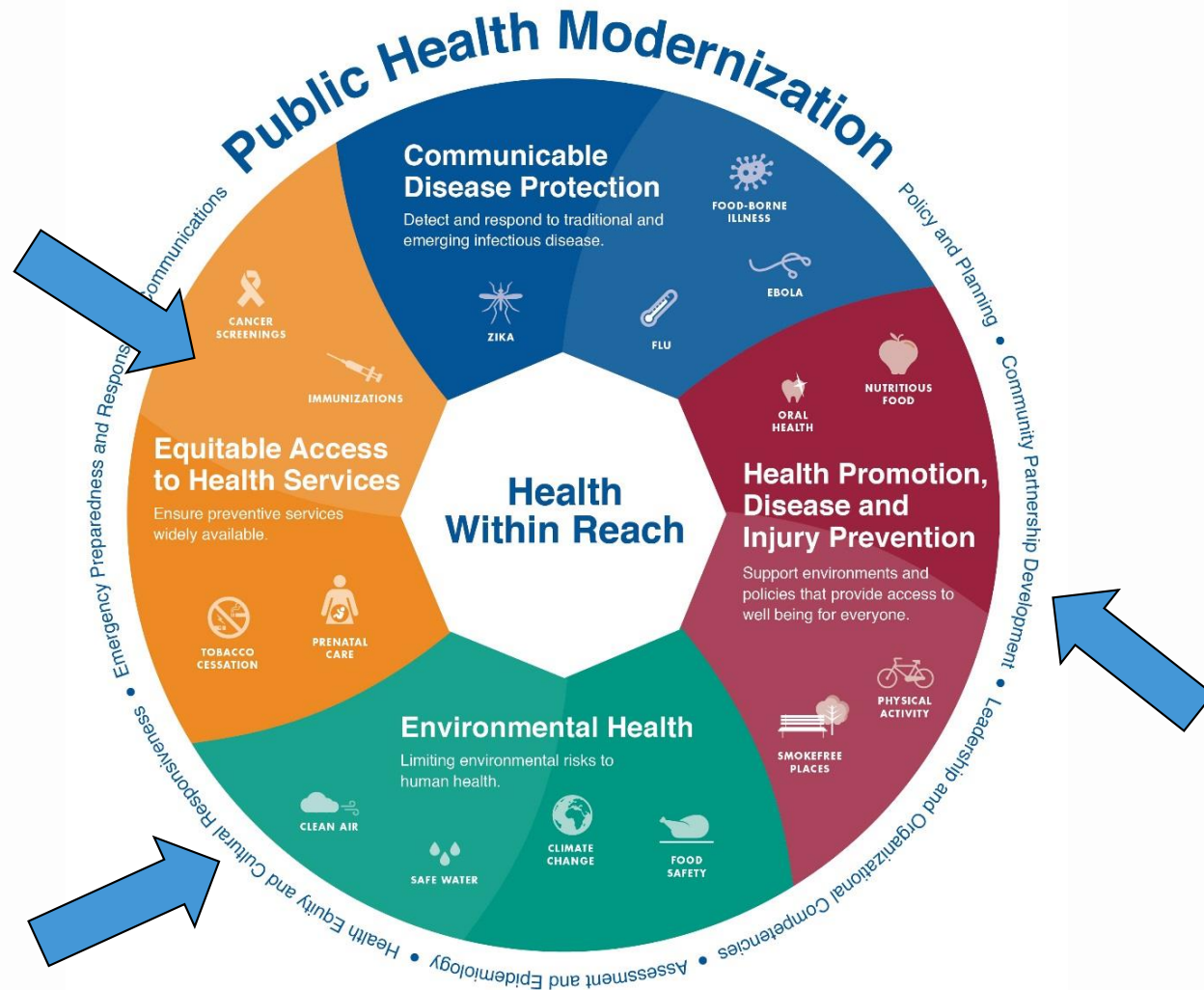


OFFICE OF THE STATE PUBLIC HEALTH DIRECTOR
Public Health Division

Oregon's public health system



What does this mean for a CBO?



For Oregonians to be healthy, we need to invest in community

Our work is to lead change in sharing power and authority with community partners

PUBLIC HEALTH DIVISION
Office of the State Public Health Director



PUBLIC HEALTH DIVISION
Office of the State Public Health Director

COVID Community Engagement Team



Larry Hill



Ashley Huling



Chelsea Penning



Cintia Vimieiro



Suly Rosales



Jessica Hua



Jula Krewson



Mina Craig



Kasfian Khan



Chelsea Peterson



Jessica Beltrán



Kristen Chancellor



Justin Torres

Metropolitan Family Services



PUBLIC HEALTH DIVISION
Office of the State Public Health Director



CBO COVID 19 Highlights

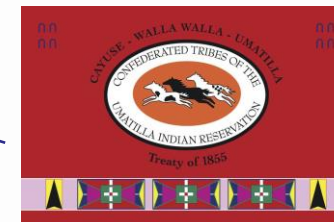
Ballet Folklórico Ritmo Alegre



PUBLIC HEALTH DIVISION
Office of the State Public Health Director

Columbia River Inter-Tribal Fish Commission

Formed in 1977 to restore fish runs and protect member tribes' treaty fishing rights at their traditional fishing areas throughout the region.



Columbia River Intertribal Fish Commission

PUBLIC HEALTH DIVISION
Office of the State Public Health Director

Covid-19 Prevention

To help prevent the spread of Covid-19, please follow CDC recommendations while exercising your treaty fishing right:



Stay home if sick!

Avoid contact with sick people and stay home if you feel unwell, show any symptoms, or have been exposed to someone infected with covid-19.



Wash hands



Frequently wash hands with soap and water.

Wear a mask



Wear a mask whenever around others in public.

Don't touch face



Avoid touching your eyes, nose, and mouth.

Avoid crowded fishing sites



Have a backup plan in case your intended fishing site appears too crowded. Only fish with those in your immediate household.

Practice social distancing



Stay 6 feet away from others who are not in your immediate household when in public.

Carry your own hand sanitizer



Fishing site restrooms are serviced once daily. They are only as clean as the last user and hand sanitizer may not be available.



Stay strong, for the people.
Columbia River Inter-Tribal Fish Commission
Some artwork courtesy IllumNative. Visit Illuminatives.org/warriorup

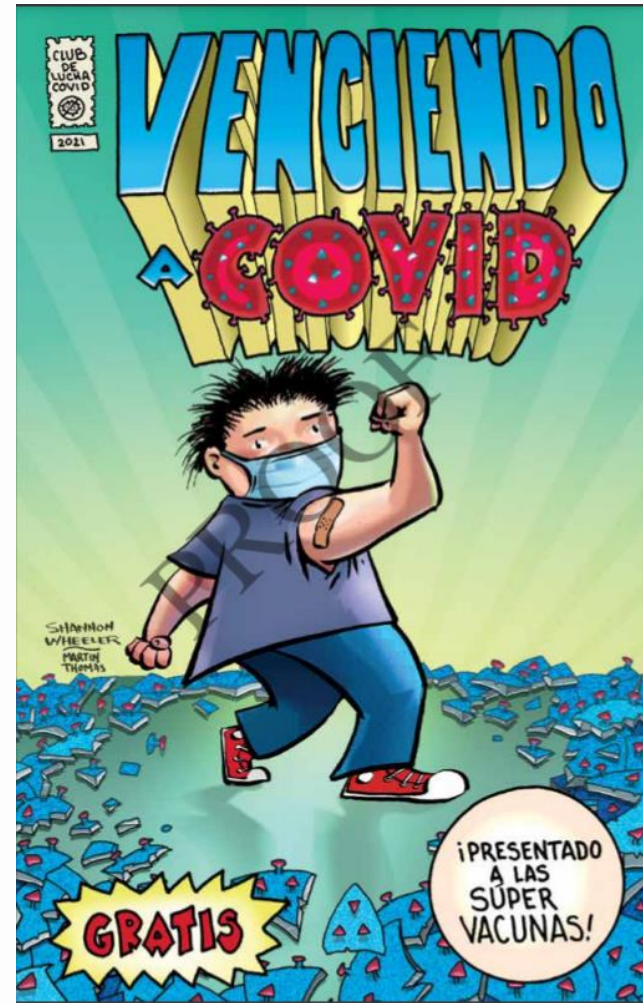
Oregon Health Authority

Vaccine Outreach and Engagement



PUBLIC HEALTH DIVISION
Office of the State Public Health Director

NW Disability Support



NAMI Clackamas



PUBLIC HEALTH DIVISION
Office of the State Public Health Director

Somali American Council of Oregon



Pacific Islander Community Vaccine Events

Case rates (as of 9/2/21)

- 11,331.6 COVID-19 cases per 100,000
- 13% Hospitalization

Currently, about 80%
of the community is
fully vaccinated!



Pacific Islander Community Vaccine Events

- Early and continuous engagement with community
- Collaboration and partnerships with different organizations
- Variety of outreach and vaccination events



PUBLIC HEALTH DIVISION
Office of the State Public Health Director



Olalla Center



The Now Times

PUBLIC HEALTH DIVISION
Office of the State Public Health Director

Oregon
Health
Authority

8 Program Areas

Communicable Disease Prevention



HIV/STI Prevention and Treatment



Adolescent and School Health



Health Security Preparedness and Response



EPH and Climate Change



Commercial Tobacco Prevention



ScreenWise: BCCP



Overdose Prevention



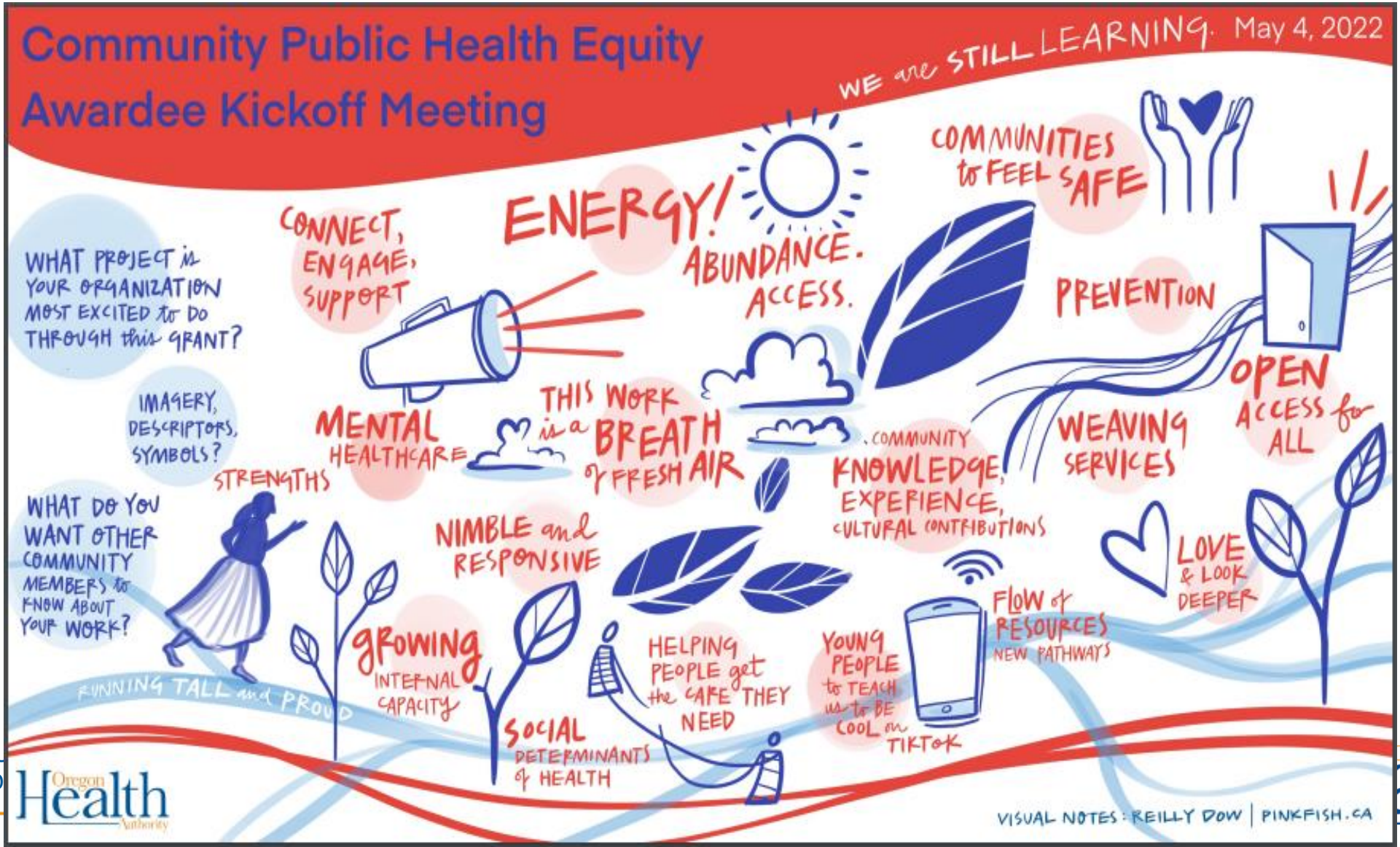


Community Public Health Equity Funding



- 1 application to apply to all program areas
- \$30 million total to invest in community
- We received 280 applications with a total request of \$150 million
- We currently fund 148 Community Based Organizations


CBO Visioning



CBO Visioning

Community Public Health Equity Awardee Kickoff Meeting

May 5, 2022



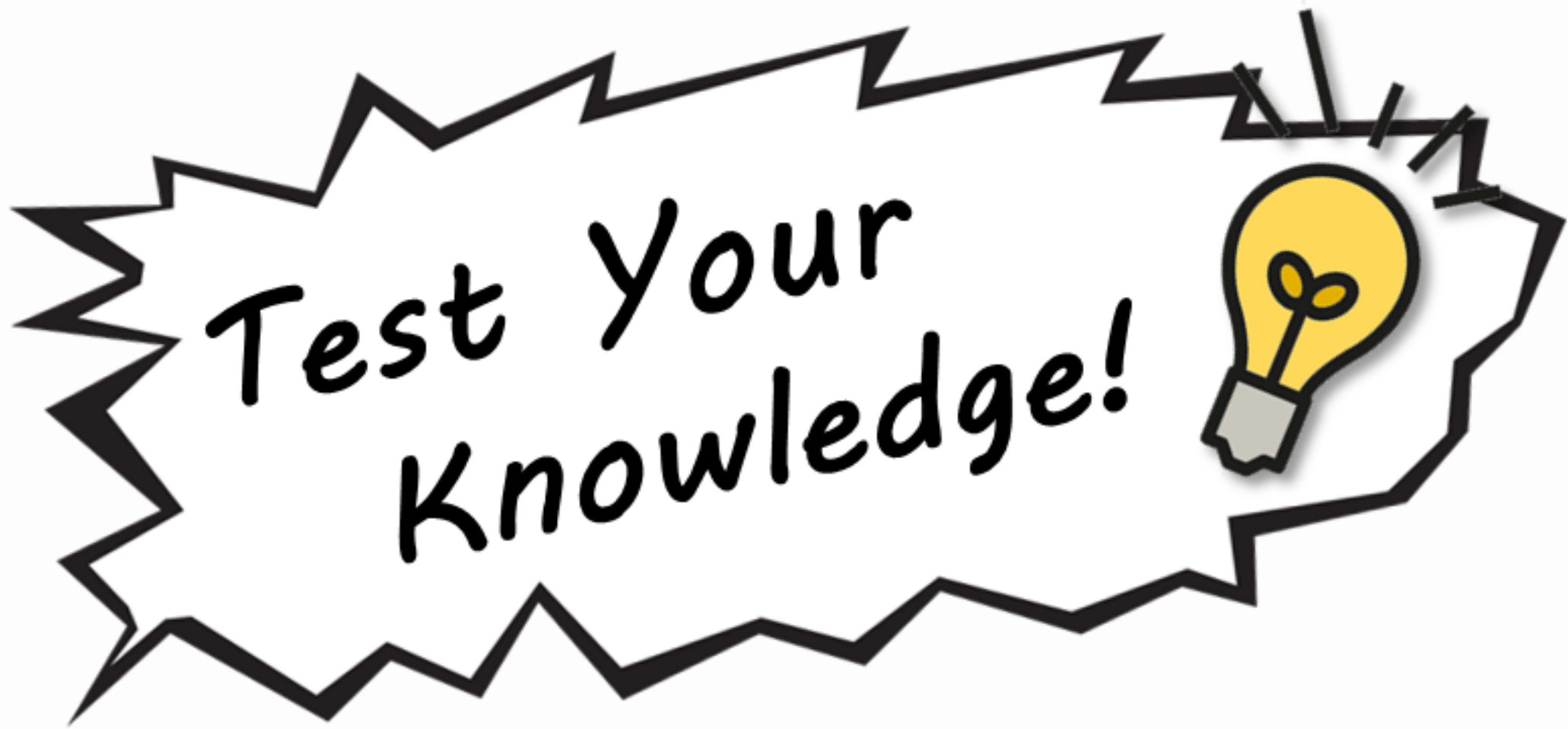
WHAT PROJECT IS YOUR ORGANIZATION MOST EXCITED TO DO THROUGH THIS GRANT?
 FOOD SAFETY
 DREAMING OF SUSTAINABLE, LONG TERM FUNDING
 MEANINGFUL WORK WITH YOUNG PEOPLE
 a THREAD that WEAVES through OUR WORK
 RESILIENCE, SKILLS & HISTORIES of COMMUNITY
 INSPIRED TO DO THIS WORK BY LOSING MY FATHER
 a BLOOMING FLOWER
 IF THERE WERE a BIKE NEARBY, I WOULD USE IT!
 a BICYCLE

WHAT DO YOU WANT OTHER COMMUNITY MEMBERS TO KNOW ABOUT YOUR WORK?
 IMAGERY, DESCRIPTORS, SYMBOLS?
 LEARNING ABOUT OTHERS DOING THIS WORK!
 STRONG, TALL TREE WITH HEALTHY ROOTS
 UPSTREAM WORK
 HOW WILL YOU USE WHAT YOU HEARD?

SEEDS OF HEARING
 WHAT INSPIRED YOU? IMAGES or SYMBOLS?

Oregon Health Authority logo

VISUAL NOTES: REILLY DOW | PINKFISH.CA



Q & A

What questions do you have for us?

Key Takeaways



Resources

- American Cancer Society: <https://www.cancer.org/about-us/who-we-are.html>
- American Heart Association: <https://www.heart.org/en/affiliates/oregon-local>
- *Broken Treaties*, Oregon Public Broadcasting; <https://www.opb.org/television/programs/oregon-experience/article/broken-treaties-oregon-native-americans/>
- Coordinated Care Organizations: <https://www.oregon.gov/oha/HSD/OHP/Pages/Coordinated-Care-Organizations.aspx>
- National Congress of American Indians; www.ncai.org
Tribal Nations & the United States: An Introduction; <https://www.ncai.org/about-tribes>
- NorthWest Center for Public Health Practice (NWCPHP): <https://www.nwcphp.org/>
- Northwest Portland Area Indian Health Board (NPAIHB): <https://www.npaihb.org/about-us/>
- Oregon Center for Nursing: research and workforce support: <https://oregoncenterfornursing.org/>
- Oregon Coalition of Local Health Officials (CLHO): <https://oregonclho.org/>
- Oregon Community Health Workers Association: <https://www.orchwa.org/>
- Oregon Health and Science University Area Health Education Centers (AHECs): <https://www.ohsu.edu/area-health-education-centers>
- Oregon Health Equity Alliance: research, advocacy, and community <https://www.oregonhealthequity.org/technical-assistance>
- Oregon Health Plan – Medicaid 1115 Waiver: https://www.oregon.gov/oha/hsd/medicaid-policy/pages/waiver-renewal.aspx?utm_medium=email&utm_source=govdelivery
- Oregon Office of Rural Health: <https://www.ohsu.edu/oregon-office-of-rural-health>

Resources

- Oregon Primary Care Association (OPCA): <https://www.orpca.org/>
- Oregon Public Health Association (OPHA): <https://www.oregonpublichealth.org/>
- Oregon Public Health Institute (OPHI): <https://ophi.org/>
- Oregon Rural Practice-based Research Network: <https://www.ohsu.edu/oregon-rural-practice-based-research-network>
- Oregon State University Center for Health Innovation: <https://health.oregonstate.edu/ochi>
- Oregon State University College of Public Health and Human Sciences: <https://health.oregonstate.edu/>
- Our Children Oregon: <https://ourchildrenoregon.org/about-us/who-we-are/>
- Oregon Health and Science University - Portland State University School of Public Health: <https://ohsu-psu-sph.org/>
- Program Elements (PEs): https://www.oregon.gov/oha/PH/PROVIDERPARTNER_RESOURCES/LOCALHEALTHDEPARTMENTRESOURCES/Pages/program-elements.aspx
- Public Health Accreditation Board (PHAB): <https://phaboard.org/wp-content/uploads/PHAB-Infographic.pdf>
- Public Health Advisory Board (PHAB - Oregon-specific): <https://www.oregon.gov/oha/ph/about/pages/ophab.aspx>
- Schools of Nursing: <https://osbn.oregon.gov/osbnreports/OregonApprovedNursingEducationPrograms.aspx>
- *This Land* Podcast, Crooked Media; <https://crooked.com/podcast-series/this-land/>
- Upstream Public Health: <https://www.upstreampublichealth.com/>
- Video: MFS Family Resource Coordinator – Matilde: <https://youtu.be/gf7zvd2sP8c>
- Video: “La Vacuna” Hoy les traigo un mensaje de esperanza: <https://youtu.be/r5aXnJwe-HY>
- Self-paced training: Public Health Systems in Oregon: https://rise.articulate.com/share/5b-Wi7E3t7DolafChpoz_OG19W04jGWr#/lessons/G_UMtNm97QjBIU_KKjB9kRnVmAn-o4MJ

THANK YOU!

Contact us!

- **Brittany Badicke, MPH** | Project Manager, Oregon Rural Practice-based Research Network, Oregon Health & Science University
- **Danna Drum, MDiv** | Local and Tribal Public Health Manager, Office of the State Public Health Director, Oregon Health Authority
- **Dolly England** | Community Engagement Program Manager, Office of the State Public Health Director, Oregon Health Authority
- **Jennifer Little, MPH** | Public Health Director, Klamath County Public Health
- **Laura Daily, MPH** | Program Manager, Oregon Coalition of Local Health Officials
- **Sara Beaudrault, MPH** | Public Health Modernization Lead, Office of the State Public Health Director, Oregon Health Authority