

CLACKAMAS COUNTY ADMINISTRATION'S KEYS TO PROTECTING THE PUBLIC'S HEALTH

DRENDA HOWATT, COMMISSION STAFF MANAGER
DAWN EMERICK, PUBLIC HEALTH DIRECTOR

AOC 2018



Health, Housing
& Human Services 
CLACKAMAS COUNTY



Public Health

KEYS TO PROTECTING THE PUBLIC'S HEALTH

1. Establish a Board of Health
2. Use a Health-Related Quality of Life Framework
3. Population Health Approach
4. Public Health Policies are Economic Policies

LOCATION

CLACKAMAS
COUNTY



Area: 1,883 mi²

Pop. (2016): 408,062

OREGON

WHAT IF



<https://youtu.be/wlysaW7CltI>

WHY THIS RELATIONSHIP MATTERS

In the United States (2000) approximately:
245,000 deaths were attributable to low education,
176,000 to racial segregation,
162 000 to low social support,
133,000 to individual-level poverty,
119,000 to income inequality, and
39,000 to area-level poverty.

These findings argue for a broader public health conceptualization of the causes of mortality and an expansive policy approach that considers how social factors can be addressed to improve the health of populations.

Estimated Deaths Attributable to Social Factors in the United States: Sandro Galea, MD, DrPH, Melissa Tracy, MPH, Katherine J. Hoggatt, PhD, Charles DiMaggio, PhD, and Adam Karpati, MD, MPH American Journal of Public Health | August 2011, Vol 101, No. 8

GOOD QUALITY OF LIFE = PEOPLE, JOBS, BUSINESS, TOURISM

County Health Rankings:

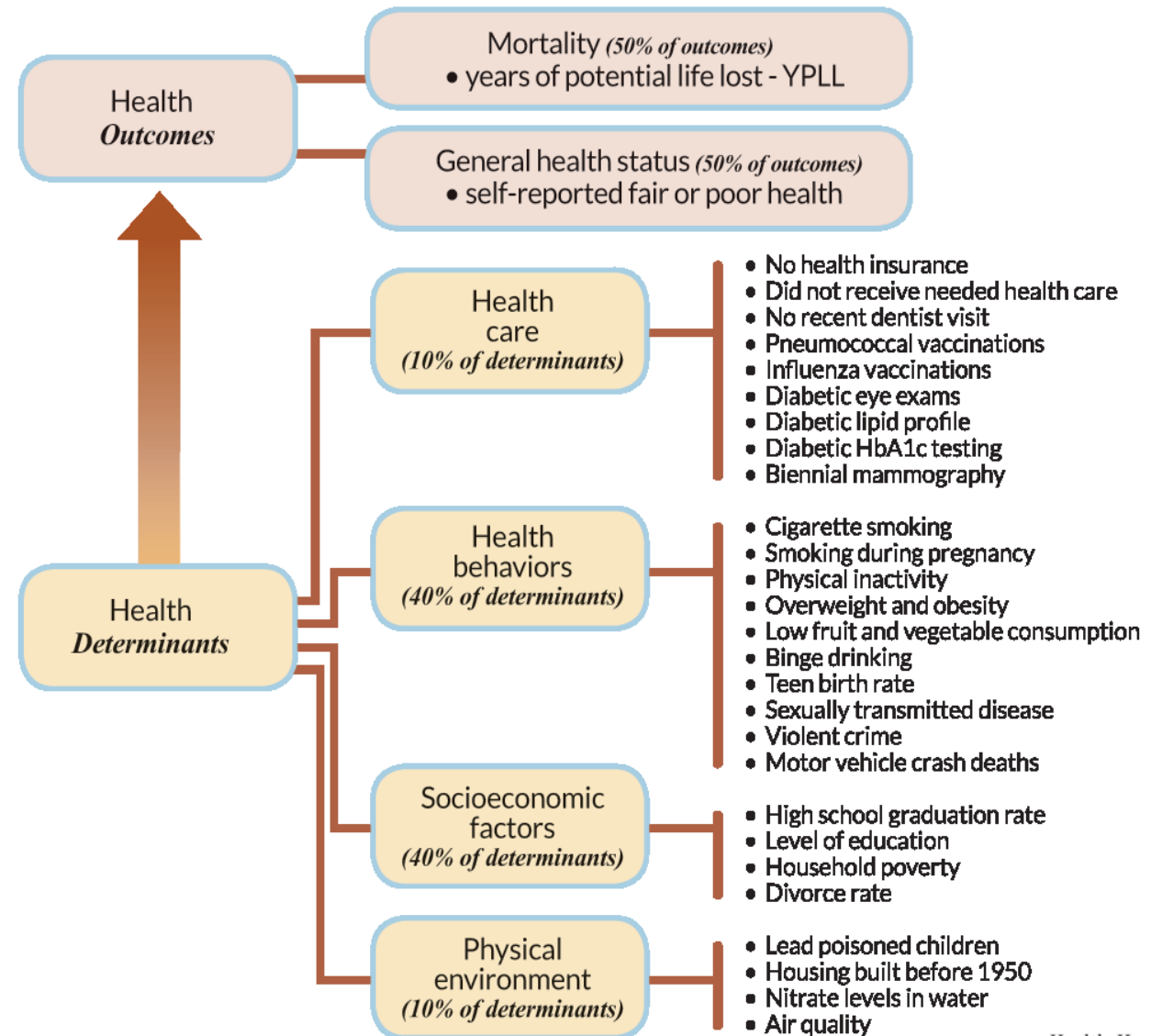
2014: #5 (25th)

2015: #5 (29th)

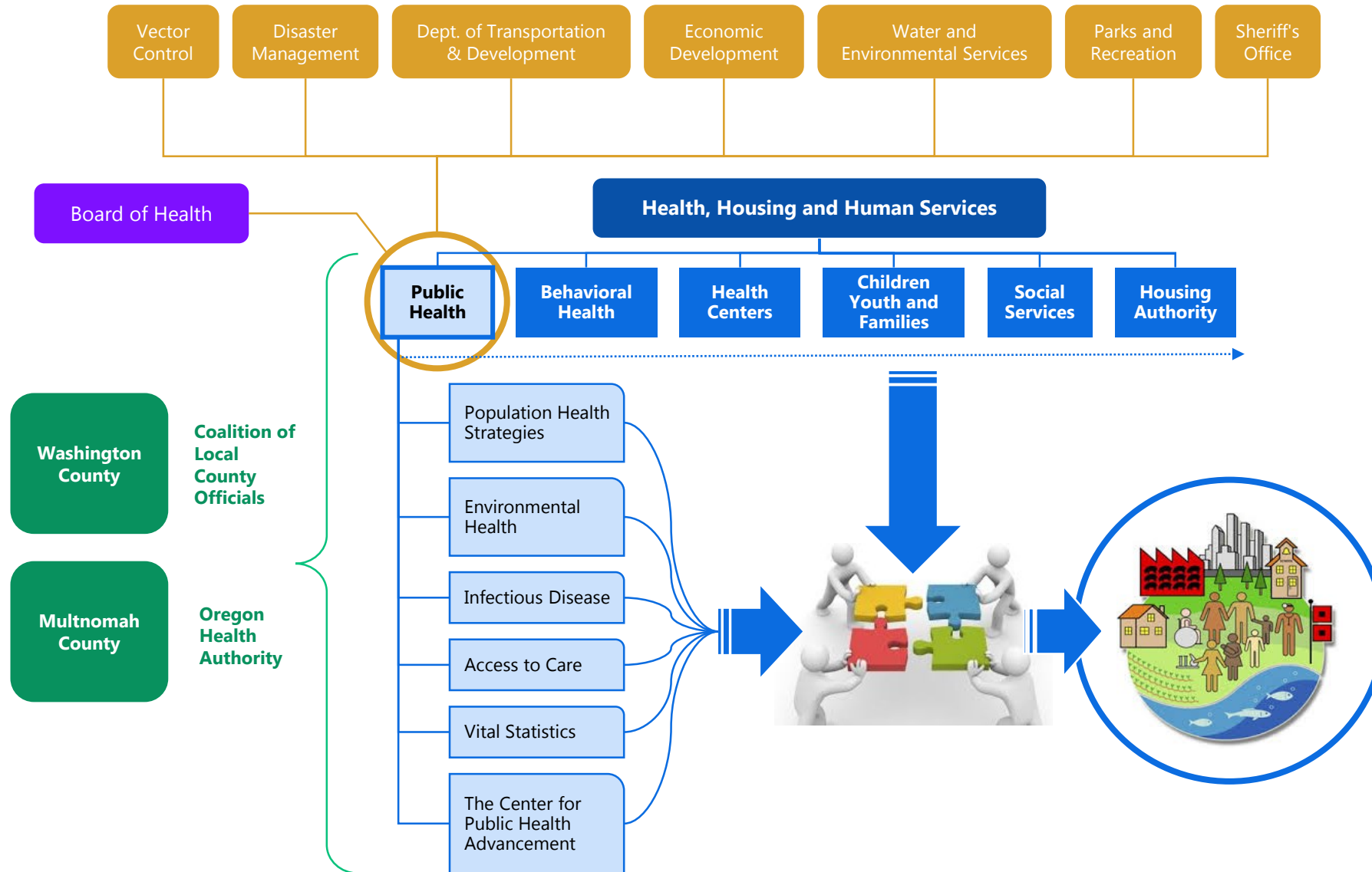
2016: #2 (35th)

2017: #2 (36th)

2018: #3 (36th)



COUNTY'S CHIEF HEALTH STRATEGIST



1978 PUBLIC HEALTH SYSTEM



OREGON'S PUBLIC HEALTH MODERNIZATION

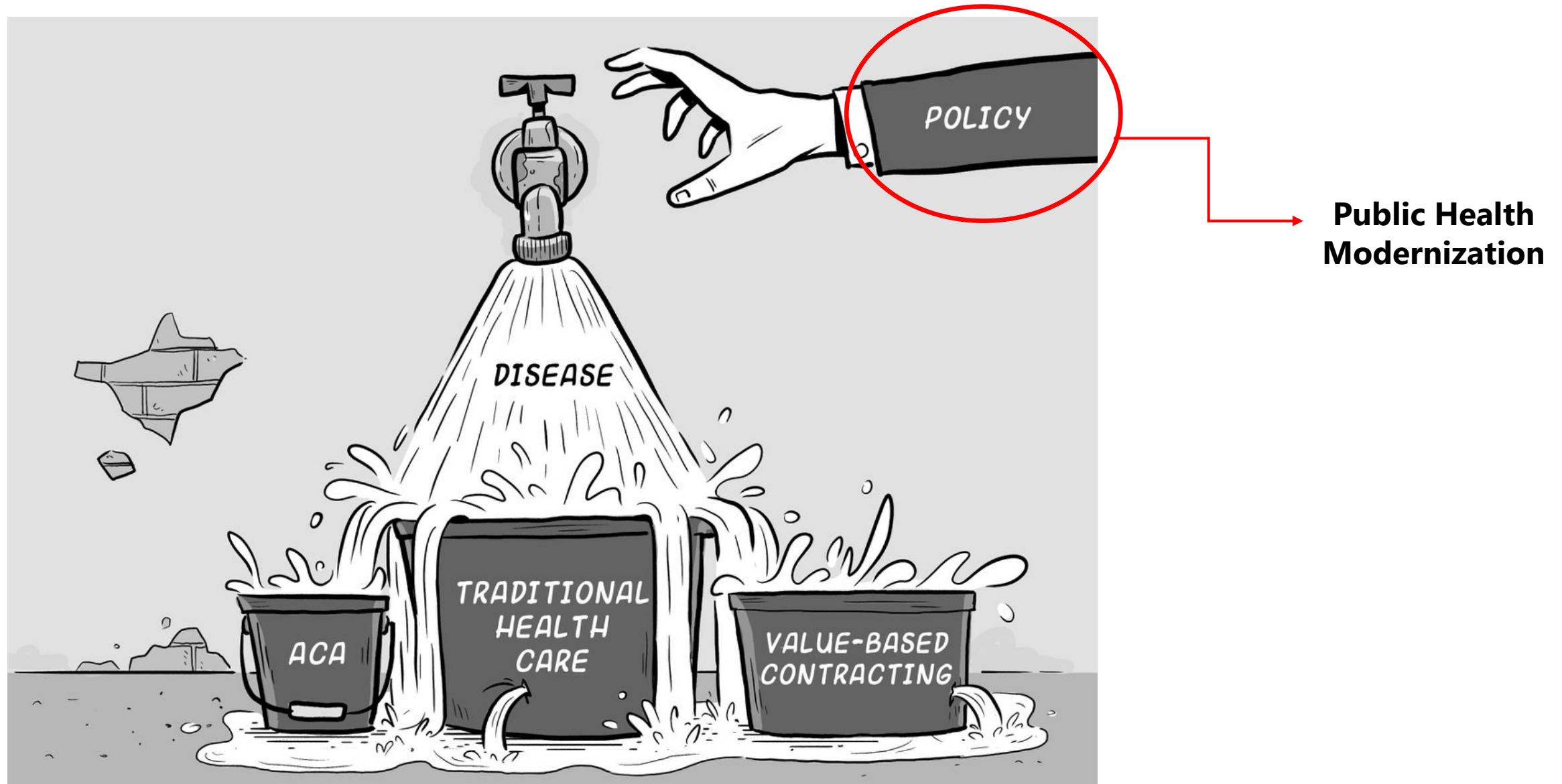


MODERNIZED PUBLIC HEALTH SYSTEM



AIRCRAFT & ROCKET ENTIRE DETAILS

PUBLIC HEALTH IS PREVENTION



1. ESTABLISH A BOARD OF HEALTH



Chair, Jim Bernard



Commissioner
Sonya Fischer



Commissioner
Ken Humberston



Commissioner
Paul Savas



Commissioner
Martha Schrader

1. ESTABLISH A BOARD OF HEALTH

Local Public Health Authority

- On-the-ground provision of public health services. Minimum activities required in law (ORS 431.416):
 - Control of disease
 - Parent and child health services
 - Environmental health services
 - Health information and referral services
 - Collecting and reporting health statistics
- Administering and enforcing state and local public health laws
- Other activities specified in state/LPHA financial services contract

ORS 431.150, 431.157, 431.262, 431.416, 446.425, 448.100, 624.510

1. ESTABLISH A BOARD OF HEALTH

- State and local public health authority have authority to:
 - Investigate possible violations of law
 - Issue subpoenas, orders, civil penalties
 - Seek court orders to enforce public health law
 - Oregon's isolation and quarantine laws ORS 433.121 to 433.138, and 433.466.
 - Isolate or quarantine someone on an emergency or nonemergency basis referring to the immediacy of the need to confine a person who has a communicable disease or who is contaminated with a toxic substance.
 - Require removal or abatement of toxic substances
 - Refer matters for possible criminal prosecution

1. ESTABLISH A BOARD OF HEALTH

Serves as the Board of Health for Clackamas County, set forth in ORS 431.415:

- The county Board of Health is the policymaking body of the county
- The county Board of Health shall adopt rules necessary to carry out its policies
- The county Board of Health shall not adopt a rule or policy that is inconsistent or less strict than any public health law or rule of the Oregon Health Authority
- The county Board of health may adopt schedules of fees for public health services

2. USE A HEALTH-RELATED QUALITY OF LIFE FRAMEWORK

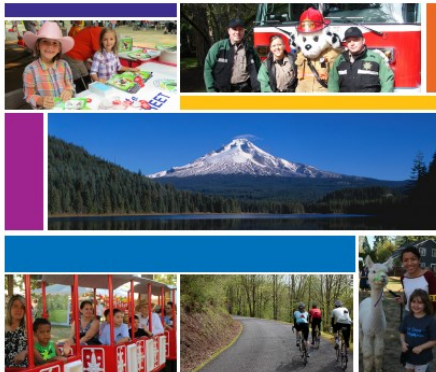


Blueprint for a Healthy Clackamas County

- Based on the 2017 Community Health Assessment

Blueprint for a Healthy Clackamas County

2017 - 2020



- Our version of Community Health Improvement Plan
- Focused on partners working together to assure residents enjoy equitable access to resources, opportunities and environments that maximize the health of their communities
- Prioritizes the external work Clackamas County Public Health conducts with partners and projects that are funded (via Blueprint Community Grants)

2. USE A HEALTH-RELATED QUALITY OF LIFE FRAMEWORK



2. USE A HEALTH-RELATED QUALITY OF LIFE FRAMEWORK

Assessment of Community Needs

(2017 Clackamas County Community Health Assessment)

Blueprint for a Healthy Clackamas County

(focused community health improvement activities within Health Equity Zones)

Access to Health Care & Human Services

- Increase Utilization of Services
- Improve Quality
- Transportation

Culture of Health

- Early Childhood Development
- Food Insecurity
- Housing

Healthy Behaviors

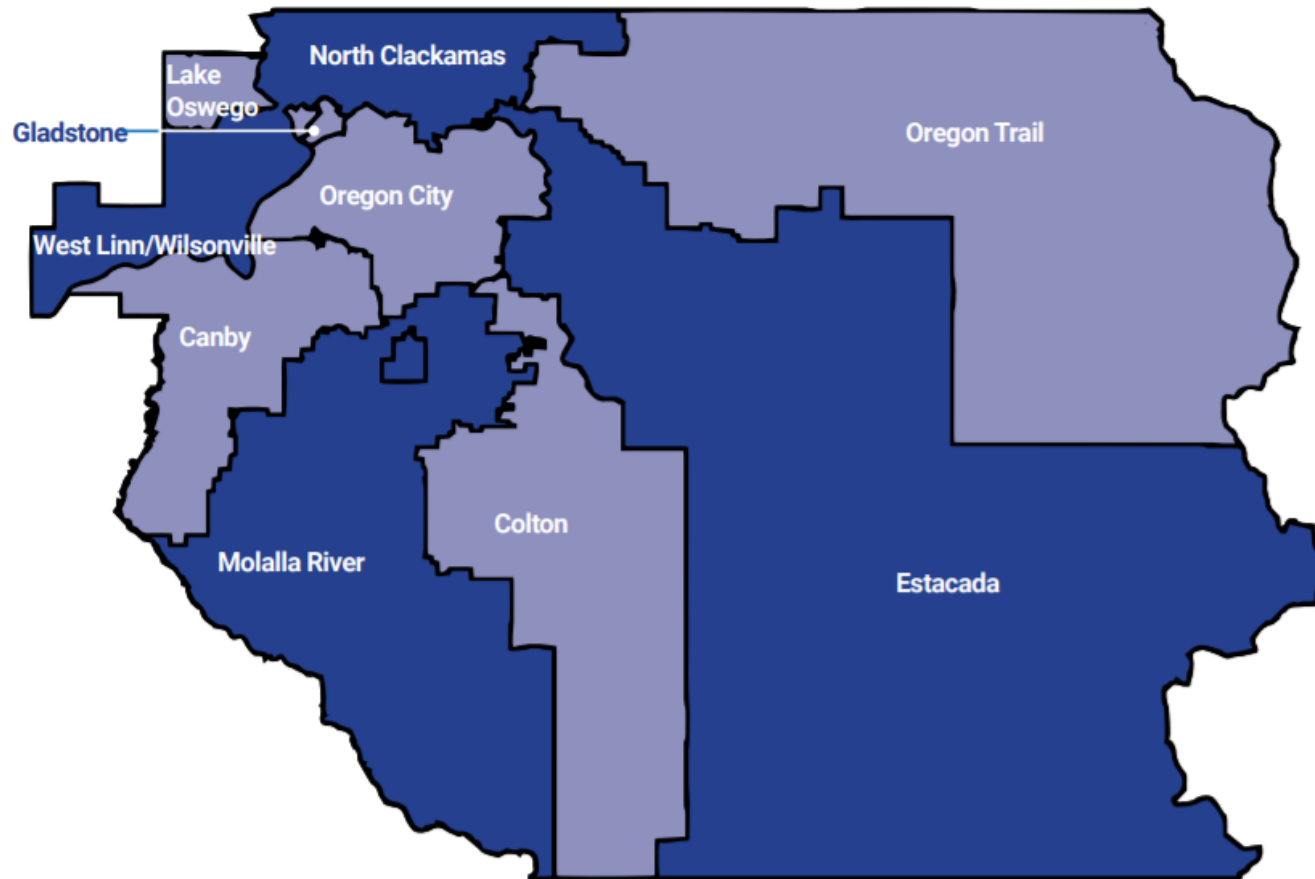
- Heart Disease & Diabetes
- Substance Use/Abuse & Suicides

2. USE A HEALTH-RELATED QUALITY OF LIFE FRAMEWORK

- American Medical Response
- Clackamas County Children's Commission
- Clackamas Education Service District
- Clackamas County Department of Transportation & Development
- Clackamas Dental Society
- Clackamas Fire District #1
- Clackamas County Behavioral Health Division
- Clackamas County Public Health Division
- Clackamas County Social Services Division
- Clackamas Service Center
- Health Share of Oregon
- Kaiser Permanente Northwest
- Northwest Housing Alternatives
- Orchid Health
- Oregon Coalition for Dental Care
- Oregon DHS
- Planned Parenthood Columbia Willamette
- Project Access NOW
- Community Advocates / Residents / Volunteers

3. POPULATION HEALTH APPROACH

Clackamas County is economically and geographically diverse, which has historically made it difficult to analyze the health of particular communities.



Health Equity Zones are a new concept developed to address the gaps in our knowledge about the health and specific social determinants of our communities.

Clackamas County's 10 Health Equity Zones divide the county into small geographic areas to display data that communicates the health, equity and quality of life needs of local communities

Quality of Life Measures:

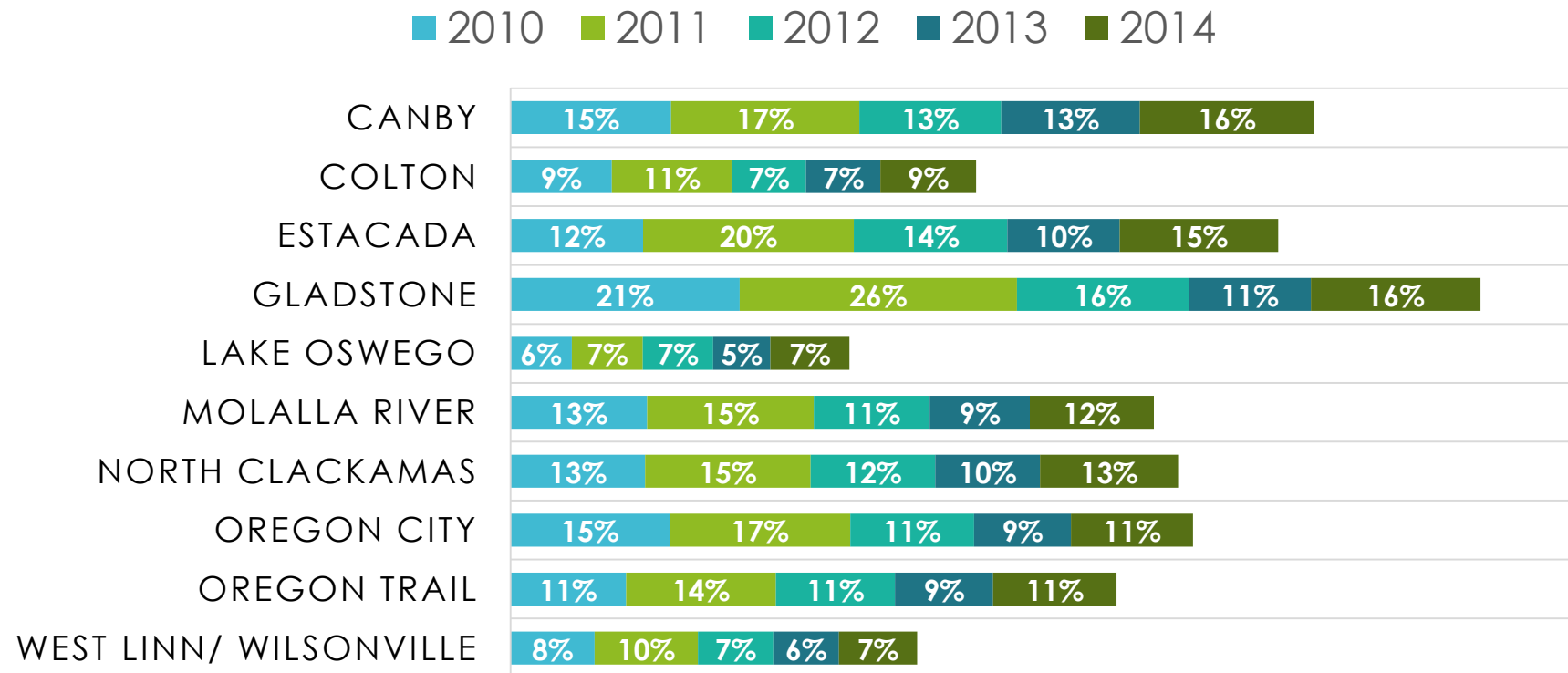
QALYs are a measure of years lived in perfect health gained whereas DALYs are a measure of years in perfect health lost.

Life Expectancy

Life expectancy at birth estimates are available nationwide down to the neighborhood level for virtually every community in America.

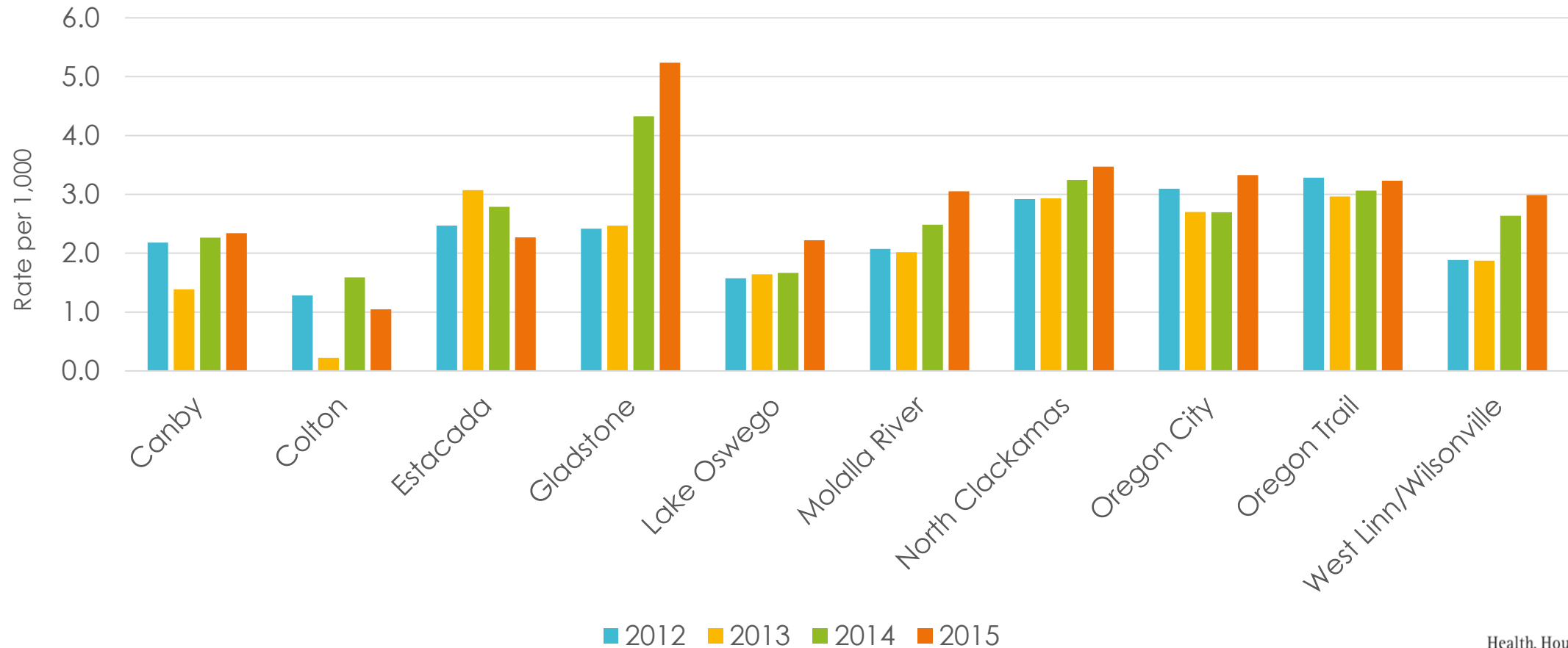
3. POPULATION HEALTH APPROACH

ESTIMATES OF CHILDREN 5-17 LIVING IN POVERTY, BY HEALTH EQUITY ZONE 2010-2014



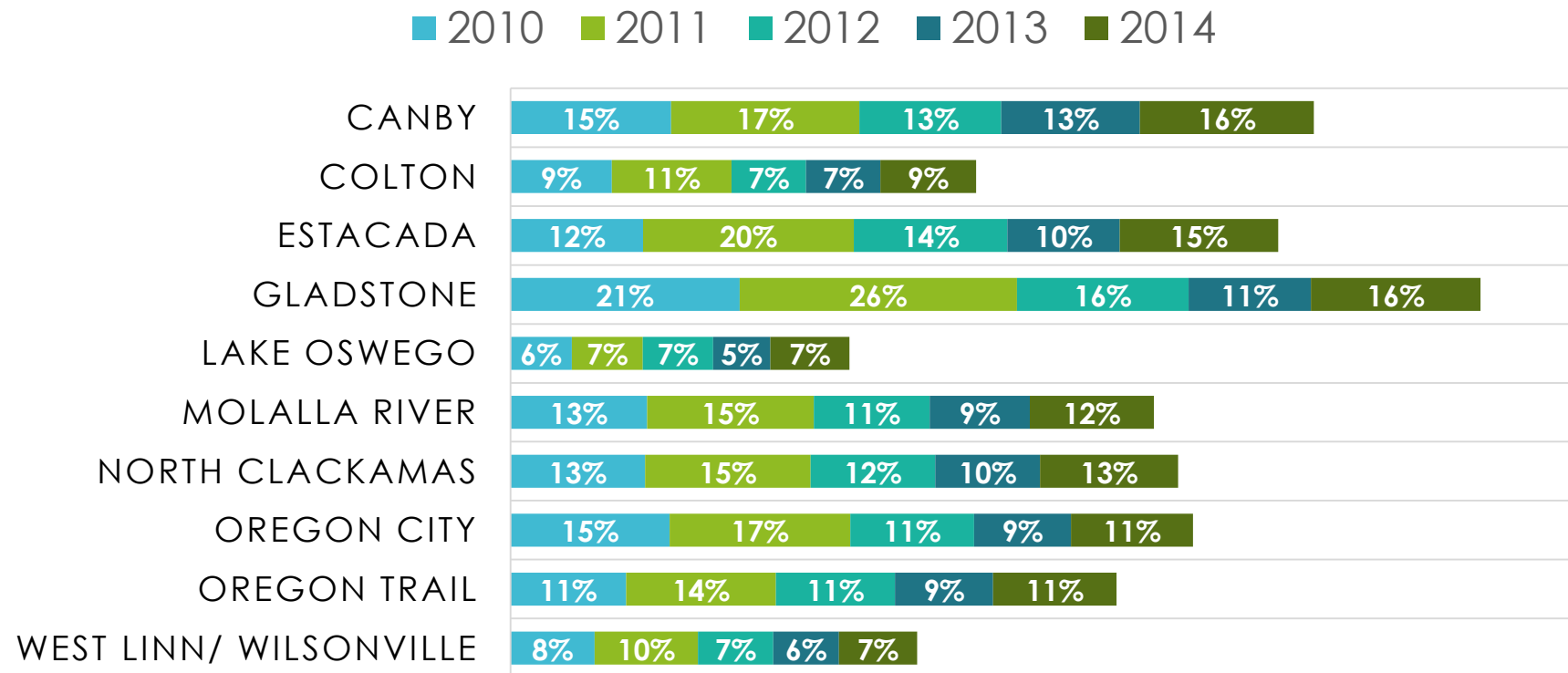
3. POPULATION HEALTH APPROACH

**CHLAMYDIA CASE RATE PER 1,000 RESIDENTS, CLACKAMAS COUNTY, 2012-2015
BY HEALTH EQUITY ZONE**



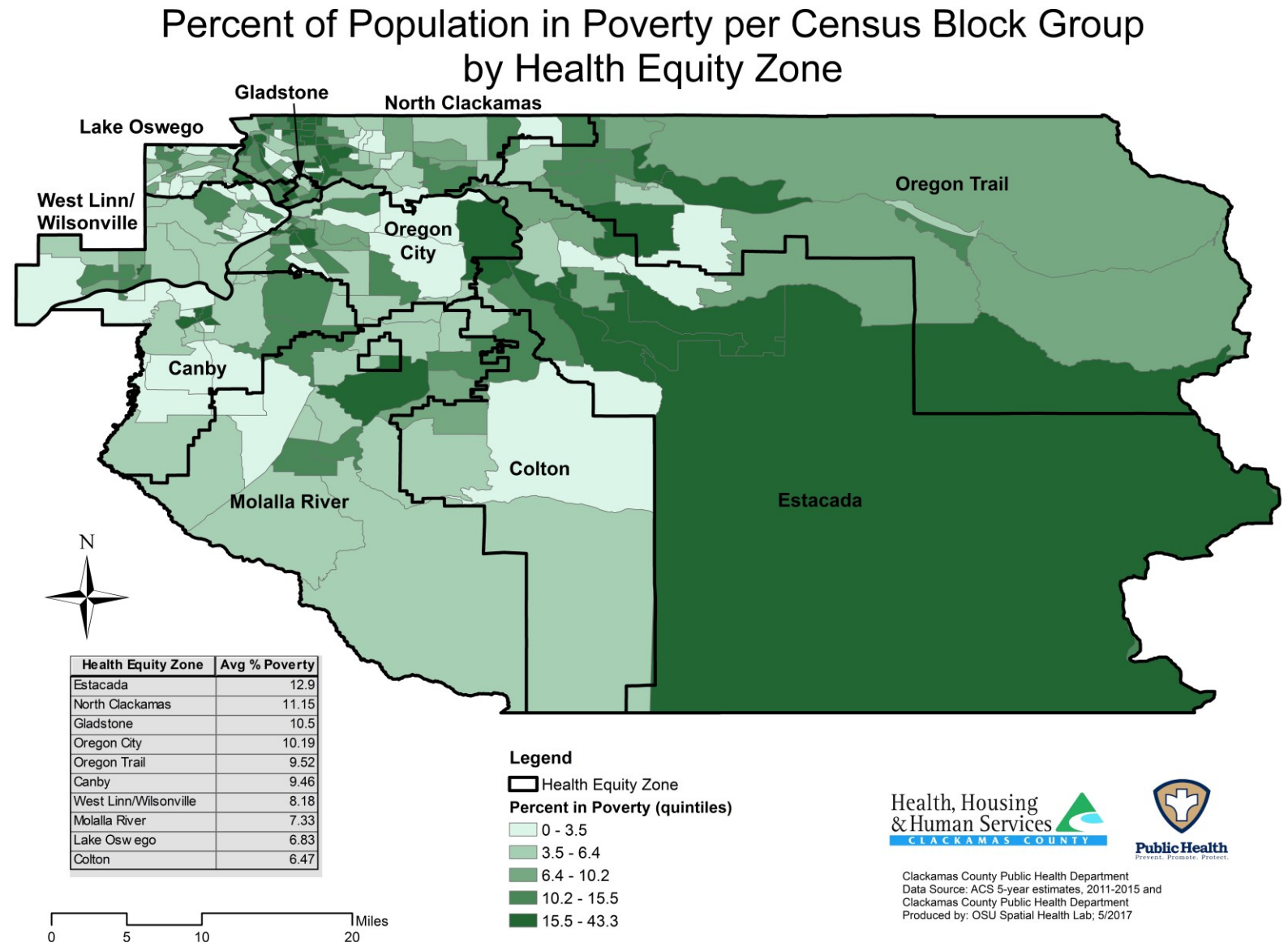
3. POPULATION HEALTH APPROACH

ESTIMATES OF CHILDREN 5-17 LIVING IN POVERTY, BY HEALTH EQUITY ZONE 2010-2014



3. POPULATION HEALTH APPROACH

County Administrator's Dense Poverty Project



4. PUBLIC HEALTH POLICY IS ECONOMIC POLICY

Veterans Shelter and Intentional Transitional Living Project

Health and Safety Impact Review

Clackamas County

Health, Housing & Human Services

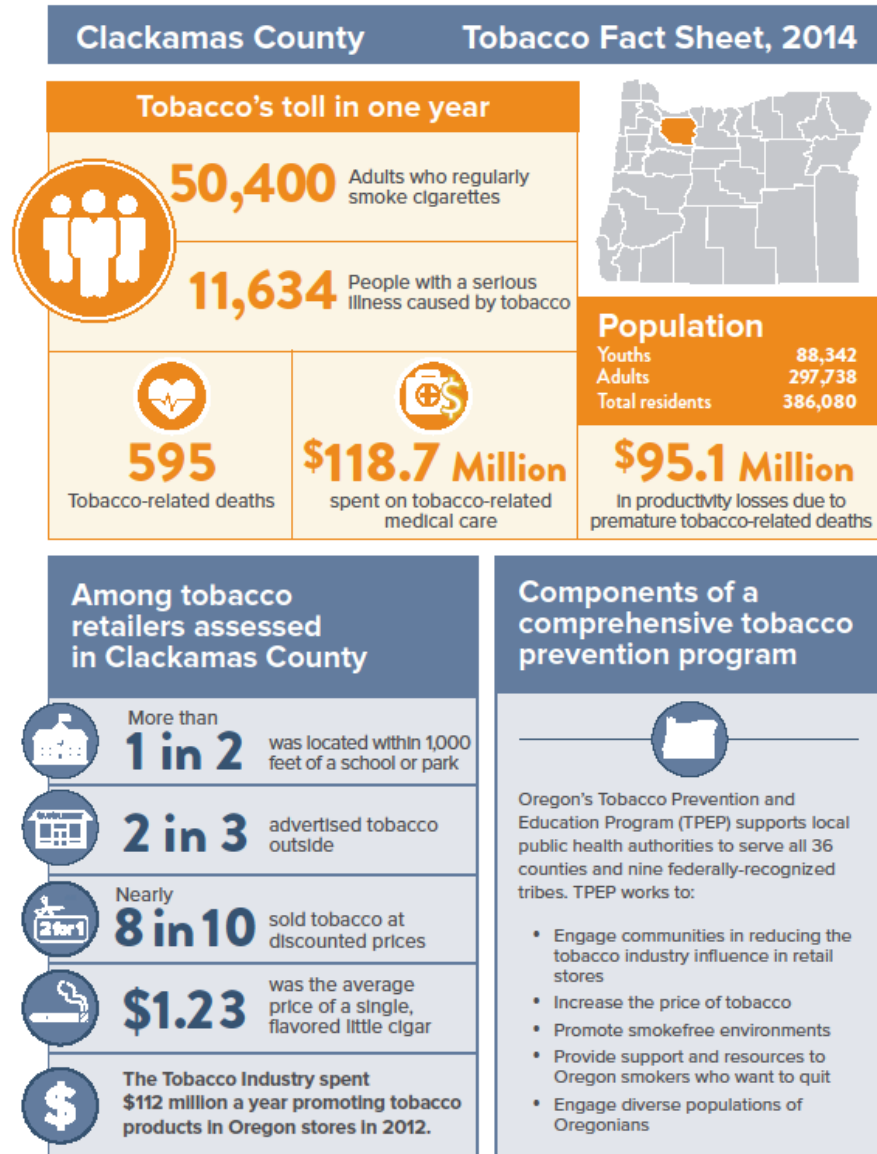
Center for Public Health Advancement, Public Health Division

Healthy Safe & Clean Places, Public Health Division

Department of Transportation and Development



4. PUBLIC POLICY IS ECONOMIC POLICY



Top three causes of death

- 1) Major cardiovascular disease
- 2) Cancer (lung, breast, lymphoid)
- 3) Chronic lower respiratory diseases (emphysema)

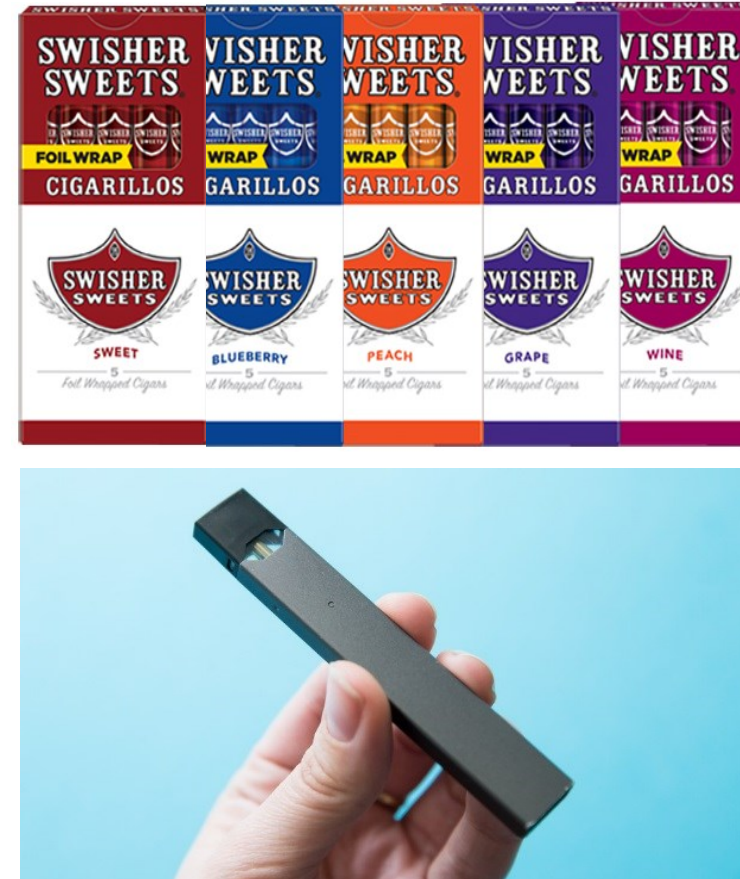
Clackamas County Community Health Assessment

4. PUBLIC HEALTH POLICY IS ECONOMIC POLICY

Youth are vulnerable to nicotine

- 25% used any tobacco product
- 41% have used any form of tobacco before age 18
- 1 in 3 youth said it would be “very easy” to get tobacco

Oregon Healthy Teen Survey 2017



4. PUBLIC HEALTH POLICY IS ECONOMIC POLICY



Earned Sick Leave

Earned sick leave laws reduce the spread of contagious illnesses, increase employment and income stability, and save cities money in health care costs.

LEARN MORE ►



High-quality, Universal Pre-Kindergarten

Children who attend high-quality pre-k are more likely to succeed in school, go on to stable jobs and earn more as adults—all of which are linked to better health and stronger communities.

LEARN MORE ►



Affordable Housing/Inclusionary Zoning

As cities grow, it's important that residents of all income levels have access to affordable housing that sets them up for good health.

LEARN MORE ►



Complete Streets

Complete streets policies unlock opportunities by allowing city residents to safely walk, bike, drive and take public transit around their community.

LEARN MORE ►



Alcohol Sales Control

Neighborhoods with high concentrations of alcohol outlets are linked to more drinking and higher rates of violence and driving under the influence. Policies that control the number of alcohol sales outlets can reduce crime, increase safety, and reduce spending on health care and criminal justice.

LEARN MORE ►



Tobacco 21

Curbing tobacco use among young adults has been shown to decrease the number of people who start—and continue—smoking.

LEARN MORE ►



Smoke Free Indoor Air

Comprehensive smoke-free air laws protect non-smokers from secondhand smoke and reduce smokers' consumption of tobacco—the leading cause of preventable death in the US.

LEARN MORE ►



Food Safety and Restaurant Inspection Rating

Policies requiring food establishments to publicly post safety inspection "grades" empower consumers, reduce foodborne illness rates and cut down on health care costs.

LEARN MORE ►



Healthy Food Procurement

Policies that make sure healthy food options are available on public property aid city residents in making smart decisions that will help them achieve and maintain a healthy weight.

LEARN MORE ►



4. PUBLIC HEALTH POLICY IS ECONOMIC POLICY

Chambers of Commerce have endorsed cigarette tax hikes, raising the smoking age or ban smoking workplace.

Association with increased life expectancy of a community and stronger economic growth

Tourism / Travel warnings due to infectious diseases and herd immunity vulnerabilities

"Smoking isn't just killing us, it's bankrupting us," spokeswoman with the Chamber of Commerce for Kentucky,

The Amazon 2.0 "winning" city- Recipient of some 50,000 new jobs and a five billion dollar capital expenditure "Companies do look at the health of a workforce...An unhealthy workforce "is a deterrent."

Can't divorce the health of your company from that of the surrounding community where your employees will live, raise their families, and educate their children

Clackamas County is competing with other cities located in the Portland Metro Area. A healthy workforce is a strategic imperative and a competitive advantage



SUMMARY

- Mutually beneficial relationship
- Quality of life framework to inform county governance
- Leverage the expertise and enforcement of public health law to assure public safety, reduce personal harm, and improve quality of life
- Accessing retrospective and prospective population health data to improve life expectancy and ensure a strong workforce
- Understanding that public health policies are economic policies.

Questions?

