

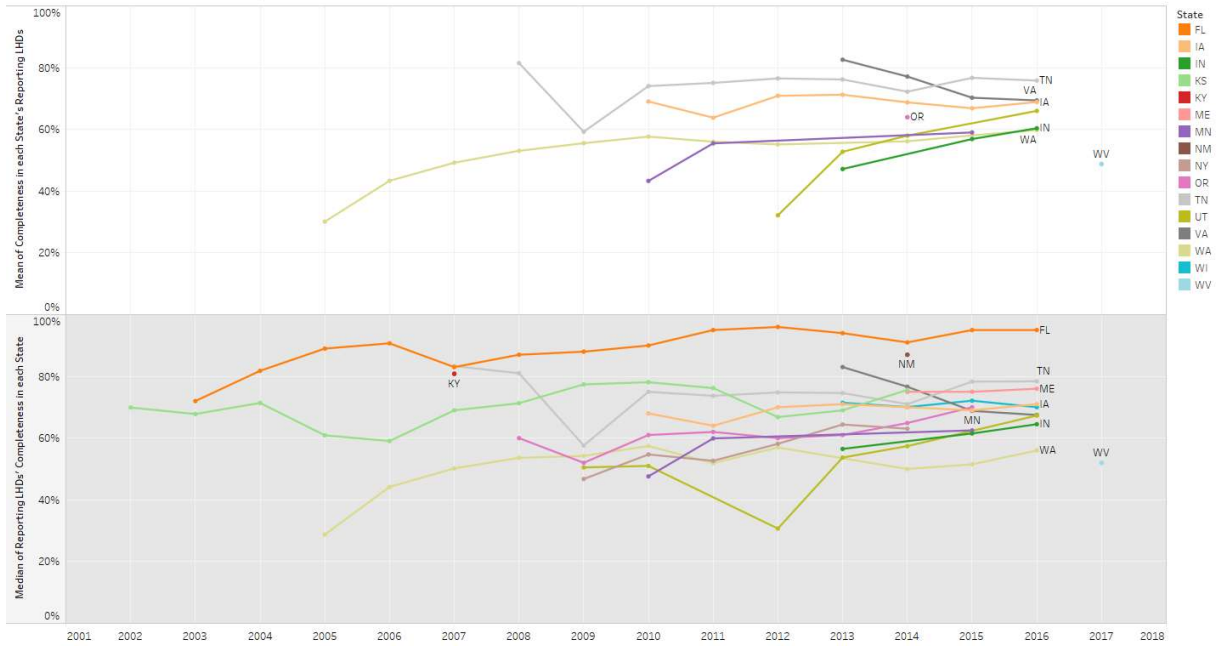
Public Health Activities and Services Tracking Immunization Dashboards

State Average of Childhood* Immunization Completeness over Time

PHAST Imms Viz 1

*Age ranges differ; hover over data points for details.

These data are not standardized across states. Comparisons must take this into consideration. Please see technical documentation for details.



The trends of state average and median state avgs for Year (copy). Color shows details about State. The marks are labeled by State. The data is filtered on Childhood definition and Year. The Childhood definition filter keeps multiple members. The Year filter keeps 16 of 16 members. The view is filtered on State and Set 1. The State filter excludes State A, AZ, CA and NJ. The Set 1 filter keeps 17 members.

Median Proportion of Childhood* Immunization Completeness by Sampling Method

PHAST Imms Viz 2

*Age ranges differ; hover over data points for details.

These data are not standardized across states. Comparisons must take this into consideration. Please see technical documentation for details.



Median of Perc Complete broken down by Year vs. Sampling Method and State. Color shows median of Perc Complete. The marks are labeled by median of Perc Complete. The view is filtered on Set 1 and 2010 onward. The Set 1 filter keeps 17 members. The 2010 onward filter keeps 8 members.

Childhood Immunization Completeness

PHAST Imms Viz 3

State Overview

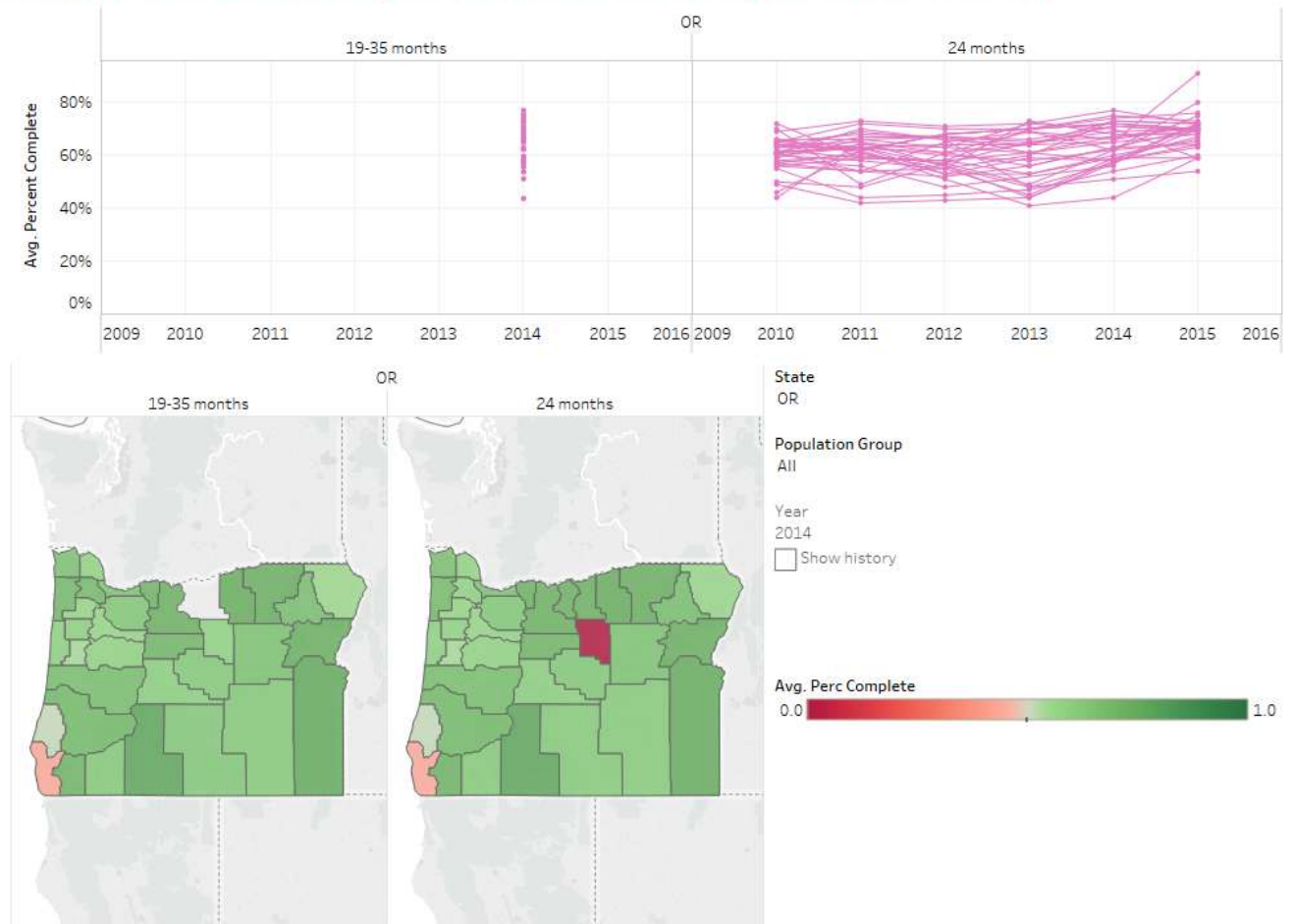
State Detail

Compare States & LHD
Distributions

Childhood* Immunization Completeness over Time for Local Health Departments

*Age ranges differ; hover over data points for details.

These data are not standardized across states. Comparisons must take this into consideration. Please see technical documentation for details.



Childhood Immunization Completeness

PHAST Imms Viz 4

State Overview

State Detail

Compare States & LHD
Distributions

Percent of Children* with Complete Immunizations

Year
2015

*Age ranges differ; hover over data points for details.

These data are not standardized across states. Comparisons must take this into consideration. Please see technical documentation for details.

